

**Extract of Greater Nottingham Landscape Character  
Assessment as it relates to Gedling Borough  
(December 2016)**

## **Introduction**

This document has been prepared in order to present the Landscape Character Assessment (2009) as it relates to Gedling Borough Council in a user friendly format.

The document does not update or amend the text from the 2009 document in any way but pulls out those chapters most relevant to Gedling Borough and in particular to provide the Draft Policy Zones relating to the Borough for the users convenience. The DPZs contain detailed descriptions of the landscape character and recommendations for policymakers. Some chapters of the Landscape Character Assessment (2009) are reproduced to provide context and a summary of findings. This has allowed the Landscape Character Assessment (2009) to be presented as a single document which is intended to be easier for users to navigate. Please note that the page numbering corresponds with the original document so is no longer always consecutive.

The reader is referred to the Landscape Character Assessment (2009) for the following chapters:

6.0 Planning Policy Context

7.0 Existing Character Studies

9.0 Forces for Change within Greater Nottingham

10.0 Summary of desk-based findings

11.0 Public Consultation

**GREATER NOTTINGHAM  
LANDSCAPE CHARACTER ASSESSMENT**

**CONTENTS**

**Executive Summary**

<b>1.0</b>	<b>Introduction</b>	<b>Page 1</b>
<b>2.0</b>	<b>Purpose</b>	<b>Page 2</b>
<b>3.0</b>	<b>Application of the landscape character assessment</b>	<b>Pages 3-4</b>
<b>4.0</b>	<b>Study Objectives</b>	<b>Page 5</b>
<b>5.0</b>	<b>Method</b>	<b>Pages 6-11</b>
<b>8.0</b>	<b>Landscape Context</b>	<b>Pages 26-33</b>
<b>12.0</b>	<b>Landscape Character</b>	<b>Pages 47</b>
<b>13.0</b>	<b>Monitoring Framework</b>	<b>Pages 48-51</b>
<b>14.0</b>	<b>Conclusions</b>	<b>Pages 52</b>

## **APPENDICES**

**Appendix 1 List of Regional Character Areas and Landscape Character Types**

**Appendix 7 Summary of interviews on forces for change in Greater Nottingham**

**Appendix 8 Summary of Stakeholder Consultation Event comments on character types/Draft Policy Zones**

**Appendix 9 Regional Character Area (summary descriptions) & DPZs (detailed descriptions)**

**Appendix 11 Glossary**

## EXECUTIVE SUMMARY

This study has looked at the landscape of Greater Nottingham and will provide part of the evidence base for the local authorities Local Development Frameworks (LDF). It will be used by the planning authorities to aid development control decisions on planning applications and to guide landscape enhancement where funding and opportunities allow.

The physical landscape varies considerably and includes land which has been influenced greatly by coal mining operations in the north which are largely characterised by restored spoil mounding and smaller areas of more rural character. To the west of Nottingham the land is often influenced by urban development comprising large settlements and smaller villages. To the east the land is a series of distinctive rolling hills and narrow incised river valleys (known as Dumbles) and larger wooded plantations which mark the start of the historic and distinctive Sherwood region. To the south the land is strongly associated with arable farmland with large areas of uniform farmland with few trees or woodlands. Hills known as 'The Wolds' are distinctive prominent features in the south; they often form a backdrop to more gently undulating farmland.

The document provides a way of assessing the varied landscape within Greater Nottingham and contains information about the character and condition of the landscape to provide a greater understanding of what makes the landscape within Greater Nottingham special. Landscape varies subtly across the whole county and this is the case within Greater Nottingham, The study has recognised this through the identification of 79 Draft Policy Zones (called Landscape Character Types within Erewash Borough).

A Draft Policy Zone (DPZ) is an individual area which has a unique sense of place although it shares similar characteristics to other areas within broader regional areas identified as part of the East Midlands Regional Landscape Character Assessment.

The study has identified how well the landscape character areas could adapt to change without severe detrimental effect on their character and integrity. Particular emphasis has been placed on the transition between the settlements to the wider countryside. Future changes which threaten the landscape were identified during stakeholder engagement and whilst surveying on site and guidelines to ensure the preservation of local distinctiveness are provided.

This information will be used to help inform the aligned Core Strategy across the local authorities and will help to protect special landscapes and provides guidance on how to improve less special landscapes.

## 1.0 INTRODUCTION

1.1 Distinction in landscape is created through the interplay between people and place and encompasses all land, not just land designated for its natural beauty. It arises from unique patterns and combinations of different components and elements.

1.2 The European Landscape Convention (ELC) came into effect in the UK in March 2007. The ELC was the first international convention on landscape and is dedicated exclusively to the protection, management and planning of all landscapes in Europe. It provides an international context for landscape and emphasises its importance alongside biodiversity and cultural heritage. The ELC definition of landscape is:

*'Landscape means an area, as perceived by people, whose character is the result of action and interaction of natural and/or human factors'.*

1.3 Landscape character assessment is an important tool for implementing the ELC within the UK. Landscape character assessment is a decision-making tool which systematically classifies the landscape into distinctive areas based on the interaction between topography, geology, land use, vegetation pattern, and human influence. Its role is to ensure that future change does not undermine the characteristics or features of value within a landscape. Landscape character assessment is an approach that can make a significant contribution to the sustainable objectives of environmental protection; prudent use of natural resources; and maintaining and enhancing the quality of life for present and future generations.

1.4 This report is a landscape character assessment of Greater Nottingham illustrated on Figure 1. It has focused on countryside around Nottingham covering the authorities of Ashfield District Council, Broxtowe Borough Council, Nottingham City Council, Gedling Borough Council, Rushcliffe Borough Council and Erewash Borough Council (the latter being within Derbyshire).

1.5 Greater Nottingham is made up of the administrative boundaries of all the local authorities stated above, except Ashfield, where only the Hucknall part is included. However, for the purpose of this study the whole of Ashfield is included.

## 2.0 PURPOSE

- 2.1 In 1997 Nottinghamshire County Council published the 'Countryside Appraisal: Nottinghamshire Landscape Guidelines' which divided the county into 10 regional landscape character areas, further sub-divided into landscape types. The project advanced the method of landscape protection and focused attention on the whole countryside. It recognised all landscapes as having their own character, and whether emphasis should be placed on conservation or enhancement. The aspiration of the project was to enrich the quality of the whole countryside. As part of this process Mature Landscape Areas were identified. These were defined as areas 'least affected by adverse change.'
- 2.2 Recent changes in government legislation (PPS7) place greater emphasis on the use of landscape character assessments in informing criteria-based policy within Local Development Frameworks (LDFs). Therefore there is a need to review and update the Countryside Appraisal.
- 2.3 Nottinghamshire County Council's landscape team commenced the update of the assessment in 2003 and have undertaken the assessment of part of the study area. Erewash Borough Council is covered by the landscape character assessment carried out by Derbyshire County Council which was undertaken using the same method as that used within Nottinghamshire.
- 2.4 In February 2009, TEP was commissioned by Nottinghamshire County Council to undertake a Landscape Character Assessment of Greater Nottingham to address the areas not yet covered by Nottinghamshire County Council's Landscape and Reclamation Team or Derbyshire County Council. Figure 2 indicates the areas surveyed by each team.
- 2.5 The councils are aligning their Core Strategies in terms of timing and strategic content, and this document will provide an important part of the evidence base to support that process and to inform the Local Development Frameworks in Greater Nottingham and Ashfield more generally. It is also intended that the document will be used to aid development control decisions on planning applications and to guide actions on landscape enhancement, where resources allow.
- 2.6 This document researches and categorises features and characteristics of the landscape and has divided the study area into broad landscape types and more detailed landscape character areas. The study also focuses on the setting of built form within the landscape and on the transition from settlements to the wider countryside. Pressures which threaten the landscape character have been identified based on perceived pressures provided by the Greater Nottingham Partnership, regional and local planning policy and from consultation with local communities. Guidelines have been produced for positive change to ensure the preservation of local landscape distinctiveness.

### 3.0 APPLICATION OF THE LANDSCAPE CHARACTER ASSESSMENT

#### Who is this document for?

3.1 This document is relevant to anyone who has an interest in landscape. The main applications for the document are considered to be:

- A technical document and evidence base to help inform landscape policies within local authorities' core strategies and local development documents;
- Providing key information to development control officers in helping to assess whether proposals are likely to make a positive contribution to local distinctiveness or whether they are likely to be detrimental in terms of scale, style and design. It will also help them to provide targeted ,landscape-related mitigation and conditions to accompany planning decisions;
- Providing key information for use by developers to help to develop designs and proposals which make a positive contribution to the local distinctiveness of an area;
- Providing broad guidelines which may help land managers to identify area-specific landscape management operations such as small-scale tree and woodland planting and boundary replacement;
- A comprehensive document that is easy to use by the general public who may have a personal interest in the landscape around where they live.
- Helping to promote what is special within the landscape of Greater Nottingham; and
- Providing a framework to assist local communities and parish councils who may wish to develop detailed parish level character assessments or detailed village design statements.

3.2 The landscape character assessment has been undertaken at a local level (1:25,000) and provides character based information at this scale. It is important to note that it is a strategic assessment rather than a field-by-field assessment and detailed decisions and assessments will still be required to consider specific local circumstances. For example new development proposed for a site will still require a landscape and visual assessment which includes an assessment of landscape character on a field-by-field basis.

3.3 The assessment has focused on the rural landscape and areas bordering urban areas; it has not assessed the character of towns or villages. The document makes reference to how settlements integrate with the surrounding landscape and any key elements or distinctive characteristics of these settlements where they are particularly evident within the landscape.

#### How to use this document

3.4 This document provides a detailed technical report of the landscape character of Greater Nottingham. It has been structured to enable users not to have to read the whole document to access information on a specific area or site.



- 3.5 The main report looks at the study area as a whole and highlights important planning designations, national and local designations and broad characteristics such as geology, soils, landform, hydrology, ecology and cultural heritage to build a picture of the character of the overall Greater Nottingham area.
- 3.6 Appendix 9 provides summary descriptions of the Regional Character Areas and detailed descriptions and profiles for the Draft Policy Zones (DPZs). It is this appendix which should be used when looking at the local character of a specific area or site. For clarity and ease of orientation the DPZs have been grouped under the relevant Regional Character Area.
- 3.7 For example, for somebody wishing to know more about a parcel of land within Rushcliffe on the northern fringes of Aslockton, the first step would be to identify the sites location on a map. Referring to Figure 17 identify the Regional Character Area which it falls and review the key characteristics. This parcel of land would belong to the Regional Character Area: South Nottinghamshire Farmlands. Then look at Figure 18 to identify which DPZ the field falls within.
- 3.8 From this use Appendix 9 to identify the characteristics of the South Nottinghamshire Farmlands and the more detailed key characteristics of the DPZ: Aslockton Village Farmlands. The key characteristics set out what features give this area a sense of place. The landscape value judgements then explain how and why this landscape is distinct from others. This has informed the character guidelines. These guidelines in combination with the key characteristics can be used to understand what types of change could occur on the field which would retain or enhance the landscape character and what is likely to alter or be detrimental to the landscape character.
- 3.9 If a particular parcel of land lies on the boundary of DPZs the following should be noted. DPZ boundaries represent 'transitional areas' where key characteristics from the two adjacent areas may be present within the landscape. In considering character for a particular field/site on a DPZ boundary it will be important to review the descriptions and key characteristics for both areas and to consider the relative landscape values and guidelines when formulating or responding to proposals.
- 3.10 The landscape guidelines for each DPZ form a useful aid for assessing proposals. For example a proposal for infill housing could be assessed on whether it conserves the prominent village skylines or if it makes a positive contribution to local distinctiveness through the use of red brick or red pantile roofs.

## **4.0 STUDY OBJECTIVES**

4.1 The main objectives of this study are:

- To review and update the Countryside Appraisal: Nottinghamshire Landscape Guidelines published in 1997;
- To promote awareness of Greater Nottingham's landscape;
- To carry out the work in accordance with the method developed by Nottinghamshire County Council and be consistent with the Derbyshire County Council approach at Erewash;
- To identify discrete areas of character and describe their main landscape characteristics;
- To assess the landscape condition, quality and significance of the areas;
- To consult with key stakeholders;
- To provide a series of recommendations and future strategies for the protection, conservation, enhancement and restoration of each landscape area;
- To identify a range of key issues and provide a knowledge base to enable informed and justified landscape related decisions; and
- To provide potential indicators that could form part of the LDF monitoring framework.

4.2 Landscape character is one of many issues which need to be taken into account in shaping the future of the area.

4.3 The identification of landscape character or its identified landscape value does not determine whether development will or will not be allowed in an area or on a site. Where development is needed to meet economic or sustainability objectives, this document will help to guide the form of development to ensure local distinctiveness and landscape quality are conserved and where possible enhanced.

## 5.0 METHOD

5.1 The framework GIS exercise on which this assessment has been based was undertaken by Steven Warnock of the Department of Geography at the University of Reading in 2004, using the 'Living Landscapes' Method that he developed. The key stages of the process are described as follows:

- Identification of regional character areas;
- Desk study;
- Interpolation of data and initial mapping of character areas;
- Field study;
- Classification and description; and
- Recommendations.

5.2 This section summarises the main approach taken to the landscape character assessment.

### **Desk study**

5.3 Desk based research included a review of available relevant published documentation. This included national, regional and local planning policy, and relevant landscape and heritage documents including the Countryside Appraisal of Nottinghamshire.

5.4 Desk based research also included an assessment of relevant Ordnance Survey (OS) maps, aerial photography and the contributing Council's Geographic Information Systems (GIS) data sets including landform, floodzones, ecological, landscape and heritage information.

### **Initial mapping**

*(Carried out by Stephen Warnock on behalf of Nottinghamshire County Council)*

5.5 The assessment has been carried out at two levels. The first level was a broad-level identification of Regional Areas (A list of these is provided within Appendix 1, these areas were sub-divided into smaller landscape character types also presented in Appendix 1). These are sub-divisions of the national Joint Character Areas and contain broadly similar characteristics. Undertaken to identify patterns in physiography, ground type, settlement pattern and land cover. This has been used within the East Midlands Regional Character Assessment. The second level is the identification of distinct units of character at a local level (typically using 1:50,000 Ordnance Survey base maps). These are called Landscape Description Units (LDU).

5.6 LDUs are homogenous units of land defined by a number of attributes which are derived from a series of GIS overlays. These identify areas of common characteristics. The LDUs were defined using various key components of the landscape including:

- Physiography – expression of the shape and structure of the landscape as influenced by both nature of the underlying geology and geological processes.

- Ground Type – soil forming environment which determines the surface pattern of vegetation and land use.
- Settlement Pattern – is the structural component of the cultural landscape reflected in the distribution of settlements; historic enclosure; and size of tenure of agricultural holdings.
- Land Cover – type of vegetation (natural and man-made) covering the land surface.

5.7 These are sub-divided into the following categories: landform; geology; soils; settlement pattern; farm type and tree cover. Through the use of GIS these patterns can be overlaid to identify areas of similar character. Each LDU has a 6 figure reference code which relates to each overlay, identified followed by a short written description.

Example	LDU 382
Written Description	6 figure reference: SSD PSS Sloping undulating, soft sandstone / sandy drift, impoverished soils, low dispersal with farms, small farms, secondary woodland
Example	LDU 389
Written Description	6 figure reference: LFB MEP Vales and valley bottoms, other fluvial drift, deep sandy loamy soils, unsettled (meadow and marsh), large estates, estate plantations

**Interpolation of GIS data**  
*(Carried out by TEP)*

- 5.8 The GIS interpolation identified detailed and often small units of character across the study area. After a brief familiarisation visit to site, it was clear that many of the LDUs only displayed subtle differences in character such as the top, side and base of a hill.
- 5.9 To rationalise and identify broader areas of similar character, LDUs were analysed to establish units which had four or more attributes the same. In these cases it is likely that at a local level the character within each LDU would be similar and guidelines and descriptions closely correlated. This was verified as part of the field survey.
- 5.10 This analysis enabled draft Draft Policy Zones (DPZs) to be formulated along with specific notes of any areas of uncertainty. These areas formed the basis for the field study which verified, reviewed and refined the draft DPZs.

**Field study**

- 5.11 The detailed field study was carried out by Chartered Landscape Architects, both by car and on foot from publicly accessible locations. During this assessment consideration was given to individual elements such as built form, land use, landform, vegetation, hydrology, views and aesthetic factors and the interaction between them which cannot be determined by desk study alone. This allowed distinctions to be made between recognisable patterns in the landscape.
- 5.12 Key distinguishing characteristics were recorded on site using a standardised survey sheet, an example of which is included in Appendix 2. Representative photos were also taken for each DPZ and have been used to illustrate the character area descriptions. Survey locations were chosen to cover many of the LDUs which lie within each DPZ.

**Classification and description**

- 5.13 Following the field survey, the identified draft DPZs were refined. The information was collated to provide a factual description for each of the DPZs. The text describes the key elements which create a sense of place, the landscape's intactness from a visual and functional perspective, landform, land use and field pattern, and makes reference to ecology, archaeology and cultural heritage, built form and vegetation composition where appropriate.

**Making recommendations**

- 5.14 The first part of making recommendations for each DPZ was the assessment of landscape quality. This is a judgement regarding the condition of landscape features combined with the strength of landscape character. This is based on the combination of strength of character and landscape condition.
- 5.15 The method used by Nottinghamshire County Council for assessing landscape quality differed slightly, however the output of both methods produced similar landscape actions for each DPZ. The NCC method is summarised at Appendix 3.

**Strength of Character:**

- 5.16 This is determined by a range of criteria:
- An assessment of how characteristic features and elements combine to form a sense of place;
  - How distinctive and recognisable are the pattern of elements that make up the character, including both positive and negative elements;
  - Presence and quantity of distinctive features; and
  - Identification of landscapes containing historic patterns and features which may have declined or become fragmented thereby weakening character but which could be reinstated.
- 5.17 A three point scale has been used to make judgements as to strength of character: **Strong; Moderate; and Weak.**

- *Strong Character*  
Strong character is defined as a consistent distribution of distinctive characteristics such as rock outcrops, hills, river floodplain, and woodland. These characteristics combine to create a strongly distinctive sense of place. Minor changes in land use or land cover would not necessarily detrimentally influence character. An example would be Gotham and West Leake Wooded Hills and Scarps where the hills (Wolds) and mature woodland on them are distinctive repetitive features which are consistent and exert a strong influence on the surrounding landscape. This creates a strong and distinctive sense of place.
- *Moderate Character*  
Distinctive characteristics are consistent though the area although their distribution is less obvious or less frequent. The landscape still has a recognisable and distinctive character although it could be altered or weakened through minor changes in land use or land cover. An example would be Selston and Eastwood Urban Fringe Farmland where the agricultural land has few distinctive features and the sprawled settlement pattern does not contribute to the sense of place. However, the landscape history is still evident in the mining influences and relics contribute to the sense of place.
- *Weak Character*  
A landscape where features and patterns are present which help to define character, however, there are often numerous influences none of which are overriding and many features show signs of alteration or decline. Even minor changes in land use or land cover could have a marked influence on the character of the area. An example would be at Fulwood Disused Workings where the landscape features are mixed and where elements are unified they are typically heavily influenced by man such as restored landform and plantation woodland.

### **Landscape Condition**

- 5.18 A judgement is made by consideration of state or intactness of landscape features, elements and characteristics and how these combine to inform a positive visual impression. This includes elements such as hedgerows, woodlands, field pattern, urban influences, infrastructure and restored landscapes. Judgements of condition are made as to how identified characteristics positively influence the appearance of the landscape.
- 5.19 A three point scale was used to make judgements: **Good, Moderate and Poor**
- *Good Condition*  
Features are well managed and are almost always intact and of consistent quality. There is little evidence of loss or decline in the condition of features. At Gotham and West Leake Wooded Hills and Scarps hedgerows and woodland are well managed, although there is some evidence of minor field boundary fragmentation in places. Where hedgerows have been replaced, the timber fencing is usually in good

condition. The agricultural land is well managed and features are intact with little sign of decline.

- *Moderate Condition*

Features are mostly well managed although in places there is evidence of decline in management and loss of features such as some fragmented hedgerows or dilapidated walls. At Selston and Eastwood Urban Fringe there is some evidence of hedgerow fragmentation and the use of wire fencing instead of hedgerows. The restoration of the coal mining landscapes has improved the condition of the landscape and this will improve further as the planting matures.

- *Poor Condition*

Few features are intact or well managed. Loss or decline of features is frequent. Boundaries such as hedgerows are rarely intact and other boundaries are often of variable style and condition. Such elements combine to give an untidy or disjointed appearance to the landscape. At Fulwood Disused Workings where hedgerows and woodland lack management in places, and due to industrial/mining intervention, field pattern is largely absent. Where field pattern remains it is often fragmented.

5.20 A landscape strategy matrix, shown in Table 5.1 is used as a basis for guiding landscape judgements and forming management recommendations for the character areas. This is a useful tool as it provides a consistent basis upon which judgements can be made. From both condition and strength of character judgements, the table can be used to identify an appropriate management strategy.

5.21 The strategic categories used in this assessment for landscape quality are:

- **Conserve**
- **Enhance**
- **Restore**
- **Create**

5.22 **Conserve:** where the landscape quality is considered to be good (due to good condition and strong character) and there should be an emphasis on protecting or safeguarding the key features and characteristics of the landscape in their present form.

5.23 **Enhance:** emphasis should be to improve existing features which may not be currently well-managed or where existing features are of good quality but could be of greater benefit if improved. This may include improvements to landscape management practices or the introduction or removal of elements or features in order to strengthen character and/or improve perceived condition.

5.24 **Restore:** emphasis should be on repairing or re-establishing features that have been lost or are in a state of severe decline.

5.25 **Create:** where the landscape quality is poor (due to poor condition and weak character) and the original landscape pattern is no longer evident. In such places there is a need to form new and different landscapes. An example of this is a landscape which has been heavily influenced by quarrying and industry, field pattern and features are no longer evident and the restored land has altered the land form.

**Table 5.1 - Landscape quality and associated landscape strategy matrix.**

Landscape Condition	Good	Moderate <i>Enhance</i>	Moderate – Good <i>Conserve and Enhance</i>	Good <i>Conserve</i>
	Moderate	Poor – Moderate <i>Enhance and Restore</i>	Moderate <i>Enhance</i>	Moderate – Good <i>Conserve and Enhance</i>
	Poor	Poor <i>Restore/Create</i>	Poor – Moderate <i>Enhance and Restore</i>	Moderate <i>Enhance</i>
		Weak	Moderate	Strong
		Strength of Landscape Character		

5.26 Using the information gathered in the desk and field studies and taking into account the overall management strategy from Table 4.1, landscape guidelines and management strategies were suggested for each DPZ. These are based on guidelines to conserve and protect the positive characteristics of the area and recommendations on how to enhance and restore aspects of the landscape to strengthen landscape character and reduce the influences of features which detract from landscape quality and condition.



## **8.0 LANDSCAPE CONTEXT**

8.1 The Greater Nottingham study area lies north of Leicestershire and east of Derbyshire. It incorporates Erewash Borough which is within Derbyshire.

8.2 This section addresses the physical factors which have an important influence on the landscape.

### **Geology**

8.3 There are numerous geological SINCS within the study area designated because they demonstrate distinctive features. RIGS are sites which are regionally important and are designated for their educational value, aesthetic value and historical significance in terms of important advances in earth sciences. SINCS are usually sites which are of more local significance for geology and often also have an element of wildlife value (described within the ecology section of this report).

8.4 Along the western boundary of the study area between Stapleford and Stanley is a region identified as the Nottinghamshire Coalfields. The geology of this area includes Coal Measures Strata, comprising shales and layers of sandstone alternating with stems of coal outcrop along the south-western edge of Nottinghamshire.

8.5 The Magnesian Limestone Ridge is to the east of the Northern Coalfields. This regional character area forms the southern most part of a narrow limestone ridge that extends from Nottingham northwest through the study area and continues northwards through Yorkshire to a point beyond Ripon. The composition of the Magnesian Limestone is compact partially crystalline rock and it is the relative hardness of this formation that determines land form.

8.6 The Magnesian Limestone Ridge is closely associated with a narrow swathe of softer Permian Rocks which outcrop along the western edge of the study area. The Permian rocks consist predominantly of red clays that give rise to a more subdued relief in comparison to the Magnesian Limestone. Both these beds diminish in thickness towards the southern end of the outcrop, before thinning out completely to the west of Nottingham. The limestone gives rise to a low escarpment which dips eastwards towards the overlying sandstone. The scarp is irregular in outline where many small streams have cut deep valleys into the underlying coal measures.

8.7 The Sherwood region is to the east of the Magnesian Limestone Ridge and extends from Nottingham northwards through the Borough of Gedling beyond the study area to the lowlands of the River Idle. This region comprises Permo-Triassic sandstones which rise as low hills along the eastern edge of the ridge. An outcrop of Permo-Triassic sandstones cover nearly a quarter of the Nottinghamshire County. This sandstone

formation is visible throughout the Sherwood region at points where it is exposed in cuttings, sites of mineral extraction and natural breaks in the landform such as rivers.

- 8.8 The Mid-Nottinghamshire Farmlands lie to the east of the Sherwood regions and extend northeast in a broad band through the Borough of Gedling. This region comprises a belt of Triassic rocks which consist of two formations: Waterstones and Mercia Mudstone. These rock formations form a low rolling escarpment that slopes eastwards. A prominent scarp slope along the western edge of the region overlooks the Sherwood Sandstone. The steeper part of this slope is composed of Mercia Mudstone with the gentler lower slopes being Waterstones. The combination accounts for the distinctively rolling nature of the land surface around Arnold and Gedling known locally as 'The Dumbles'.
- 8.9 Along the River Trent the area is characterised by a succession of river-borne materials reflecting the development of the river system. It mostly comprises flood gravels and more recent alluvial deposits. The gravels are notably coarse and mostly Bunter Pebble Bed debris whilst the alluvium is finer in texture and ranges from silty loam to light clay. The gravels include both outwash material and more recent riverine material. In combination they form a series of low terraces along the valley and include small 'islands' which are generally raised above the floodplain and are areas of more naturally dry land.
- 8.10 Within the southern part of the study area a belt of Triassic rocks are to the south of the River Trent between Gotham and Newark. These are the largest single geological formation within Nottinghamshire. The main rock type is Mercia Mudstone with a mix of reddish mudstone and hard sandstone 'skerries'. These are less pronounced than other places and result in a more uniform landform. The point where the Mercia Mudstone pass into shaley Rhaetic beds (a term for sediments laid down at the end of the Triassic period) is discernible by a low escarpment around Bunny and Keyworth.
- 8.11 Along the southern edges of Rushcliffe around Hickling, Colston Bassett and Langar is a low-lying clay vale. It is underlain by bluish grey mudstones and clays which alternate with layers of flaggy limestone. The softer Lower Lias beds have formed a subdued, gently rolling landform interspersed with small hillocks where thin bands of limestone exist. Rhaetic beds form a low escarpment to the south of the study area which although only between 5-10m in height is notable adjacent to the lower clay vale.
- 8.12 An area known as the Wolds lies either side of the Nottinghamshire and Leicestershire boundary and is closely associated with a dissected glacial plateau. The underlying Lias and Rhaetic beds are a series of mudstones and clays which outcrop along valley bottoms. The plateau thins out from Six Hills in Leicestershire and becomes gradually more dissected resulting in individual hills around West Leake and Gotham. These hills separate the Soar Valley from the low-lying basin of Ruddington Moor. Around Cropwell Bishop and Old Dalby is a steep scarp slope formed from an

outcrop of lower Lias clay beneath the mantle of glacial drift and provides a sharp contrast between the 'wolds' and the clay vales to the east.

### **Soils**

8.13 The wide variety of landform and geology in Nottinghamshire contributes to a wide variety of different soils types. In Rushcliffe alluvial soils, with significant sand and gravel deposits characterise the areas of floodplain, whilst sand and gravel deposited by glaciers lie around East Leake. Much of the soils are the slightly calcareous clays of the Mercia Mudstones, but a thin band of hydraulic limestone outcrops along the escarpment from Gotham to Bunny, with heavy boulder clay in the south-west of the Borough. In Ashfield the coal measures produce acid soil types. They consist of grey shales alternating with bands of sandstone, limestone and seams of coal. The soil type in Gedling is mainly stoney clay loam or clay soils in the east, with sandy soils are dominant over much of the rest of the borough. Dark brown clay loam and silty clay loam soils are found on gentler slopes where the mudstone is overlain by thin fine loamy or fine silty drift. In Broxtowe the alluvial deposits in the Trent Valley comprise terraces of clay, silt, sands, fine and coarse gravels laid down in river floods. Much of the original Trent flood plain at Chilwell and Beeston has been built upon or been quarried for gravel at Attenborough. The underlying sandstone geology in parts of the borough produces low nutrient dry soils supporting acid grasslands, heath or oak-birch woodland.

8.14 The quality of the soils across the Greater Nottingham area is variable and ranges from grade 1, excellent quality to grade 4, poor quality. Rushcliffe is a large agricultural district and is predominantly covered by grade 2 farmland, which is considered very good. There are also large patches of grade 1 farmland in the north of the area and to the south west. There are only slim belts of grade 4. The borough of Gedling is predominantly grade 2 farmland although it has pockets of non-agricultural land and grade 1 farmland. Ashfield and Broxtowe are predominantly grade 4 farmland which is of poor quality. Both are covered by large areas of urban development and have some pockets of grade 1 and grade 2 farmland, but these are only small. Nottingham is predominantly urban land and contains only small pockets of non-agricultural land and grade 2 farmland. This is illustrated on Figure 7. Whilst the agricultural grade of land has not been used as a key attribute in defining character it is useful in providing possible indicators of what may be present on such land.

### **Landform**

8.15 Landform within the Greater Nottingham area is varied and distinctive as highlighted within the geology and soils sections above. It encompasses areas of low-lying flat and open land, ridge lines, river corridors, gently undulating farmland, steeper rolling hills interspersed with small, fast flowing streams and artificial slopes of reclaimed mining spoil heaps.

**Hydrology**

- 8.16 The study area has a wide range of rivers, canals, lakes, reservoirs, streams and ditches through the landscape.
- 8.17 The River Trent forms a significant feature meandering through Nottingham. The low lying land in the river valley has been quarried for the sands and gravels and flooding the area in the restoration process has led to the formation of large pools and lakes. These include Attenborough Nature Reserve (which is a Site of Special Scientific Interest SSSI) and Colwick Country Park. The National Water Sports Centre is an important feature adjacent to the Trent and Colwick Country Park on the edge of Nottingham.
- 8.18 The River Erewash forms the boundary between Broxtowe and Erewash and forms a shallow river valley, often through urban and urban fringe landscapes. The River Soar forms the eastern boundary of Rushcliffe and the River Smite and River Devon flow in the west of the study area.
- 8.19 The Grantham, Erewash and Nottingham Canals meander through the area, although the Grantham and Nottingham Canals are now disused. There are a number of lakes through the area, often associated with stately homes or formal parks. These include Garden Lake and Upper Lake at Newstead Abbey and Wollaton Park Lake. Moorgreen Reservoir is a significant hydrological feature in the landscape in northern Broxtowe.
- 8.20 Many streams and brooks flow through the area draining the land into the larger rivers. The streams in Gedling have formed steeply incised valleys in the soft geology and contribute to the distinctive area called the Dumbles. There is a myriad of ditches and dykes through the low-lying land of Rushcliffe draining the high grade, flat farmland.

**Ecology and Biodiversity**

- 8.21 The distribution of habitats and natural features across Greater Nottingham is influenced by the landform, geology, land uses both current and past and hydrology across the area. The range of habitats including lowland farmland, woodland, river valleys and restored land gives the Greater Nottingham area a wide diversity of wildlife.

**Natural Areas**

- 8.22 Natural England has identified Natural Areas covering the whole of England at a broad scale. These provide summaries of landscape character and broad flora and fauna variations across the country. The characteristics of these areas may manifest in distinctive landscapes although landscape is not the basis of their identification. Each Natural Area is unique and created through the interaction between natural and human influences. The following areas are of relevance to the Greater Nottinghamshire study area:

*Natural Area 23- Southern Magnesian Limestone*

- 8.23 This Natural Area is a narrow band of Magnesian Limestone that stretches north from Nottingham through the Greater Nottingham study area but is never more than five miles wide. The Magnesian Limestone is described as a soft rock which has weathered easily to form:

*'rounded. It is an open landscape marked by historic limestone monuments and symbolised by ancient woodland and limestone grassland'*

- 8.24 The soils are described as ideal for cultivation because they are light and dry; for this reason much of this area has been ploughed leaving only small remnants of the original vegetation. The unimproved grasslands and ancient woodlands provide valuable habitats for birds and insects such as the Brimstone Butterfly. Base-rich flushes, rivers and streams form important wetland features. Quarries, cuttings and natural outcrops expose important geological sections in the Permian Magnesian Limestone whilst limestone gorges and caves contain important Pleistocene sediments.

*Natural Area 24- Coal Measures*

- 8.25 The Coal Measures Natural Area is to the west of Nottingham and the Magnesian Limestone Ridge. The area is characterised by a number of towns and cities that developed largely as a result of the underlying coal fields. Between this network of towns and cities the landscape comprises ancient woodlands, valley wetlands and large arable fields.
- 8.26 The nature conservation interest of this Natural Area is described as lying in its *'range of habitats including the unique blend of urban plants and animals'*. Wildlife is dependent on land use and the area contains habitats which have been produced as a by-product of the industries which have historically dominated the area. Man-made features such as disused railway lines and canals are now used as wildlife corridors and form valuable refuges for nature.
- 8.27 These more urban habitats blend with the semi-natural habitats of the wider countryside which have been shaped by centuries of agriculture. The mixture of crops and livestock provides a range of habitats which are particularly important to birds including species such as Skylarks, Lapwings and Barn Owls.
- 8.28 This Natural Area comprises the lower catchments of the Rivers Derwent and Amber and the entire catchment of the River Ecclesbourne. The river valleys exert a strong influence on the landscape. *'The rivers and reservoirs provide important habitats for pondweeds, Great Crested Newts, migrating waders and breeding and wintering wildfowl. Mires and swamps are found along the river valleys.'* Woodland is infrequent although often concentrated on narrow steep-sided valleys with scattered isolated copses on higher ground.
- 8.29 *'Mixed stock rearing with rough grazing and permanent pasture is the main land cover in the area. The lower, undulating foothills have variable*

*quality grassland while the steeper slopes are characterised by scrub and woodland.*' The pockets of unimproved neutral and marshy grassland areas attract a range of butterflies such as the Rare Brown Argus and the Green Hairstreak, and birds including Grey Partridge.

*Natural Area 32- Sherwood*

8.30 This Natural Area lies on a band of Sandstone stretching from Nottingham northwards through the Greater Nottingham study area. This area encompasses the remnant heartlands of Sherwood, historically managed as heath and wood pasture. Land use in this area is dominated by agriculture and conifer plantations although there are a number of important habitats remaining. These include heathlands, ancient broadleaved woodlands, wet woodlands and wood pasture.

8.31 Wetlands are scarce in Sherwood, but a few rivers flow across this area's incised valleys and there are several ornamental lakes associated with the landscaped Dukeries Estates. Some of these contain important features such as reedbeds and marsh which provide habitats for wildlife, particularly breeding and wintering wildfowl.

*Natural Area 33- Trent Valley and Rises*

8.32 This Natural Area lies to the south of the study area. Its underlying geology gives rise to a fertile soil ideal for agriculture. Although a large part of the area is described as being under intensive agriculture there are a number of important habitats remaining. These include neutral grassland, which is the most common type of unimproved grassland, and a number of acidic and calcareous grassland sites associated with local differences of geology.

8.33 Wet floodplain grasslands along the Soar and Trent rivers are said to *'support some of the richest wildlife and are important for many breeding birds such as the Redshank'*. This area is poorly wooded but significant concentrations of important sites are scattered throughout. Important woodlands present include ancient semi-natural stands, wet woodland and parkland. Standing water habitats of particular wildlife interest are restored gravel pits, reservoirs and canals; but there are no natural large standing waters. In this area there are also:

*'numerous gravel pits along the River Trent and its main tributaries of which some have been restored to provide habitat for breeding and wintering birds such as Reed Warblers. Many of these gravel pits and reservoirs have a diversity of associated habitats such as marsh, swamp and reedbeds. Rivers, streams and their associated habitats are also a significant feature of the Natural Area, and are dominated by the Rivers Trent and Soar'.*

Nature Conservation

*Sites of Special Scientific Interest*

8.34 In the study area there are a number of sites designated for their national importance for nature conservation. The majority of these include former quarries, railway cuttings, clay pits and gravel pits around the industrial

districts of Ashfield and Broxtowe to the west. To the south around Rushcliffe there are important nature conservation sites relating to former industrial works such as plaster pits and clay pits but also significant marshland and pastures associated with either the network of rivers and tributaries or clay-loam soils.

- 8.35 There are a number of sites within the study area that are of interest for their scientific and natural features. Sites of Special Scientific Interest (SSSIs) are designated under Section 28 of the Wildlife and Countryside Act 1981. In Greater Nottingham there are 28 SSSIs.
- 8.36 Greater Nottingham has 657 Sites of Importance for Nature Conservation (SINCs) and 108 Derbyshire Wildlife Sites designated for their local contribution to ecology. This places a degree of protection on such areas and ensures that development where necessary on such sites must make necessary accommodation of wildlife interest and minimise direct damage or disturbance.

#### *Local Nature Reserves*

- 8.37 There are 36 Local Nature Reserves (LNR) across the study area. These are designated under the National Parks and Access to the Countryside Act 1949 to preserve features of interest and to provide opportunities for further research and to encourage public to appreciate nature. These sites represent easily accessible natural areas and are particularly beneficial for education.

#### Local biodiversity targets

- 8.38 The Nottinghamshire Biodiversity Action Plan identifies a number of habitats which are important within Greater Nottingham. These reflect the varied natural conditions present within the borough and range from heathland, grassland, woodland, rivers, streams and industrial habitats. Table 7.1 presented at Appendix 5 highlights all the habitats in the Nottinghamshire Biodiversity Action Plan which are of importance within the study area.
- 8.39 Many of the areas of high nature conservation value have distinctive landscapes. However it is not necessarily the case that high nature conservation value equates to high landscape value or distinctive views. The presence of nature conservation interest or potential has not been considered as a landscape characteristic within this assessment.

### **Archaeology and Cultural Heritage**

#### Heritage

##### *Scheduled Monuments*

- 8.40 Scheduled Monuments are nationally designated under the Ancient Monuments and Archaeological Areas Act 1979 and the site and its immediate landscape setting are included within this designation and must be preserved, where possible in-situ and in good condition. There are over 74 Scheduled Monuments within the study area. Some of the areas of high archaeological or cultural value have distinctive landscapes. However it is not necessarily the case that high heritage value equates to high landscape value or distinctive views. The presence of cultural

heritage interest has only been described with character descriptions where it is a distinctive component of the landscape character of a particular area.

#### *Listed Buildings*

- 8.41 Greater Nottingham has over 3,657 buildings of architectural, historical, or landscape interest which provide social, cultural and aesthetic history, including entries that are Grade 1 or outstanding interest, Grade II\* and Grade II. Where present they contribute to the character of settlements within or adjoining the countryside. Listed Buildings, Conservation Areas and Historic Parks and Gardens are designated under the Planning (Listed Building and Conservation Area) Act 1990.

#### *Conservation Areas*

- 8.42 Areas with high concentrations of listed buildings or where the collective built form contributes strongly to the character and heritage of a place are often designated as Conservation Areas. The designation of a Conservation Area is based upon the contribution of buildings, historic layout of roads, paths and boundaries; characteristic building and paving materials; a particular combination or style of building uses; public and private spaces, such as gardens, parks and greens; and trees and street furniture, which contribute to particular views to give a distinctive character or street scene. Conservation Areas give broader protection than listing individual buildings: all the features within the area are recognised as integral parts of its character and are therefore protected.
- 8.43 The districts within Greater Nottingham have 99 designated Conservation Areas, designated for architectural merit and special character.
- 8.44 Heritage features are vulnerable to change. It is important that the most valuable sites and structures are protected and local planning policies seek to preserve sites of historical importance and ensure that the case for preservation is fully considered when assessing all proposals for new development.

#### *Historic Parks and Gardens*

- 8.45 There are 18 registered historic parks with the Greater Nottingham area. Policies within Local Plans seek to ensure that the special character of historic parks and gardens, together with their setting, are protected from inappropriate development.
- 8.46 Historic Parks and Gardens within Greater Nottingham are often large and associated with large halls and deer parks or estates. Their presence can exert an influence on the surrounding landscape character.

#### Landscape Evolution

- 8.47 The Nottingham Landscape Guidelines published in 1997 provided detailed summaries of the landscape evolution of each regional character area. These are presented at Appendix 6.



## 12.0 LANDSCAPE CHARACTER

12.1 This section includes a commentary of the differences between the key features of the landscape character identified as part of the desk based research and those noted within the field study. It then goes on to provide a broad overview of the character of Greater Nottingham. A summary of the regional character Area and detailed descriptions and landscape guidelines for each DPZ are presented at Appendix 9 with the descriptions for Landscape Character Types within Erewash Borough presented at Appendix 10.

12.2 The field study confirmed the assumptions made following the desk study stage that many of the LDU boundaries were difficult to determine on site whilst broader areas following the amalgamation of LDUs into DPZs at the interpolation stage were more apparent in the landscape. In a few areas the character changes were more defined and required sub-division and refinement of the LDU boundaries.

### **Regional Character Areas**

12.3 These are distinct geographically unique areas that share common physical associations which impart a strong sense of unity and place within an area. Summaries of this character have been based upon the descriptions provided within the Nottinghamshire Landscape Guidelines which have been reviewed and updated as part of this study. These summaries are presented at Appendix 9.

### **Landscape Description Units**

12.4 Landscape description units are identified through the patterns of geology, landform, soils, vegetation, land use, settlement form and farm type. At the local level these units represent more local patterns of character that contribute strongly to a 'sense of place'. A summary of character for each landscape description unit is provided within a mapped GIS dataset which describes the different components of character from which the unit was derived. LDUs are illustrated on Figure 13.

### **Draft Policy Zones**

12.5 A Draft Policy Zone (DPZ) is an individual discrete area of character. It has a unique identity although it shares similar characteristics to other areas within the broader regional area. DPZs are usually an amalgamation of LDUs where 4 or more of the 6 topics used for their identification are similar and the changes in character are not evident during field study.

12.6 Within larger LDUs such as LDU421 which extends from Keyworth to Flintham, the DPZs are formed as a sub-division of the wider LDU based on characteristics and combinations of individual landscape characteristics identified within the field study. The interpolation of LDUs is illustrated on Figure 14 and DPZ's are illustrated on Figure 17. Field survey points are illustrated on Figure 15 and Photograph locations are illustrated on Figure 16.

### **13.0 MONITORING FRAMEWORK**

- 13.1 Task MS4 within the brief requires key indicators for monitoring change within each landscape character area to be provided.
- 13.2 The Rural White Paper for England emphasised the need to have good information about the state of our countryside and how it is changing. The emphasis is on ensuring that criteria-based policies within local planning documents are effective in ensuring that the quality of the countryside is maintained or enhanced. The Rural White Paper set out ambitious aims which committed the government to publishing a measure of landscape change for the countryside.
- 13.3 Planning Policy Statement 12: Local Spatial Planning places emphasis on ensuring that core strategies have clear arrangements for monitoring and reporting.
- 13.4 The target of monitoring should be to demonstrate that any change within a landscape does not adversely affect the strength of character or condition of landscape features set out within each landscape character area. As described within Chapter 12, new sustainable development should make a positive contribution to the local distinctiveness of an area and should conserve or enhance the quality of the rural environment.
- 13.5 Policies and development proposals could affect the landscape in two ways: through subtle cumulative effects of small-scale development which overtime changes or alters landscape character; or through changes in management or development which cause the loss or degradation of features which are of value or which define the local distinctiveness which leads to a reduction in landscape quality.<sup>5</sup>
- 13.6 To successfully monitor the effectiveness of criteria-based policies the key objective is to identify how the policies perform in conserving, enhancing and restoring landscape elements that contribute to the key characteristics of each landscape character area.
- 13.7 In May 2002, the former Countryside Agency (now Natural England) commissioned the Countryside Quality Counts project (CQC)<sup>6</sup> which sought to produce guidance on the most appropriate way of monitoring change within the landscape.
- 13.8 The report recommended that a single indicator of change be devised which encompassed both landscape quality and landscape character. It was identified through extensive stakeholder research that the contribution landscape character makes to the countryside informs the overall quality of the land.

---

<sup>5</sup> Braintree, Brentwood, Chelmsford, Maldon and Uttlesford Landscape Character Assessment. Chris Blandford Associates: September 2006

<sup>6</sup> Countryside Quality Counts Tracking change in the English countryside, Nottingham University Consultants Ltd (June 2004)

13.9 The CQC report sets out the best practice approach to monitoring. It is this approach which should be used and adapted to suit local circumstances to monitor change within each landscape character area. The document identified the main attributes which contribute to landscape character and provided guidance on how change within these attributes could be assessed.

13.10 These themes were broadly used as the basis upon which analysis of change on landscape character areas could be assessed. The assessment incorporated these themes into judgements of character change.

13.11 The CQC report recommended that the analysis should be based on the key characteristics for each landscape character area. It highlighted that landscape character is an important part of the general framework for decision-making on environmental issues. It explained that the concept of character provides a robust foundation for the development of a more general indicator of change in countryside quality. The report identified seven themes which combine to define landscape character and are the most appropriate to use for identifying landscape change:

- Woodland;
- Boundary features;
- Agriculture;
- Settlement Pattern;
- Semi-natural habitats;
- Historical Features; and
- River and Coastal.

13.12 The Braintree, Brentwood, Chelmsford, Maldon and Uttlesford Landscape Character Assessment recommended an approach based on the CQC project. It also recommended that the key characteristics chosen should be:

- Central to the distinctive character of each landscape character area;
- Likely to experience change either in their coverage or condition; and
- Capable of being monitored against the recommendations and landscape descriptions within each character area.

13.13 This recognised that each landscape character area is likely to be different and not all of the seven themes listed within paragraph 12.11 above may be relevant in an individual character area.

13.14 To be able to usefully use characteristics as key indicators, they need to be expressed in terms of desired trends and the desired direction of the chosen indicator must be known. The report recommended seeking assistance from local stakeholders to play a role in choosing appropriate indicators and to potentially help to monitor change.

13.15 The key characteristics within each character area should be evaluated based on the following<sup>7</sup>:

- The extent or stock of characteristic elements;
- A measure of whether these are in good condition and appropriately managed;
- The extent and form of new elements within the countryside; and
- A measure of key factors affecting the 'countryside experience'.

13.16 The first two have been covered within each landscape character area's description and highlighted within the landscape capacity description. These should be evaluated during the monitoring process to determine whether they are still fundamental to the character of the area. The judgements on strength of character and condition for each landscape character area should also be reviewed. It is important to note how the features have changed and whether it has reinforced or weakened landscape character or quality. Baseline photographs provided within the character area sheets can be used to provide the baseline character. Judgements can then be grouped into the following three categories:

- Category A: character areas which show that change has been consistent with conserving or enhancing landscape character. Some of the key features may show change which is inconsistent but which could be judged to have not affected the strength of character;
- Category B: Character areas which show some change which is inconsistent with character. More than one of the key features of change is inconsistent with the published character description. These are judged as having altered the existing character; and
- Category C: A character area which shows a marked change in the key characteristics which contribute to the character and that the change is different to what is recommended to conserve, enhance or restore landscape character. This may include areas which are currently in a degraded state which have been positively restored but that restoration has altered the nature and character of the land.

13.17 In addition process indicators which could be used to monitor change could include<sup>8</sup>:

- Identification and monitoring of change within uptake/coverage of landscape enhancement schemes;
- Quality and coverage of landscape in design and access statements. These should demonstrate how a proposal positively contributes to landscape character of an area;
- Change in the coverage/completion of landscape-scale management plans which make a positive contribution to achieving the recommendations provided within each character area.

---

<sup>7</sup> Countryside Quality Counts Tracking change in the English countryside, Nottingham University Consultants Ltd (June 2004)

<sup>8</sup> Braintree, Brentwood, Chelmsford, Maldon and Uttlesford Landscape Character Assessment. Chris Blandford Associates: September 2006

- 13.18 The CQC report identified that the national review of countryside change should be undertaken every 5 years. It is proposed that the review and monitoring at a local scale be undertaken after the publication of the national review of countryside change. However, to undertake the same level of monitoring at a local level is likely to be a resource intensive process. It is recommended that a brief field-based assessment be carried out to determine whether key characteristics and descriptions remain valid for each area, particularly along character area boundaries. This should be done in combination with the process indicators to assess the effectiveness of landscape character policies in maintaining local countryside character and distinctiveness within each character area.
- 13.19 There may also be scope to include some monitoring during determination of planning applications, for example during review of Design and Access Statements. A simple record of whether landscape issues were presented may be made by a short scoring system (such as zero for not relevant; 1 for acceptable; 2 for good; and 3 for excellent). Trends in coverage of landscape matters could then be reviewed over periods of time. This form of monitoring involves greater officer time but provided it is kept simple and as part of the overall determination process may be able to be accommodated relatively easily.

## 14.0 CONCLUSIONS

- 14.1 This study was undertaken to provide evidence to inform Greater Nottingham's aligned Local Development Framework (LDF). It is also intended to help development control decisions on planning applications; to inform negotiation of planning obligations; and to guide actions on landscape enhancement where resources allow.
- 14.2 The study has demonstrated that there is a wealth of distinctive landscapes in Greater Nottingham offering a diversity of experience to stakeholders who clearly express the value they place on landscapes. The study builds upon the long-standing excellence of landscape assessment in Nottinghamshire and the resulting character assessment provides a strong basis for planning and landscape management.
- 14.3 The desk-based aspect of this study analysed available GIS mapped data and published documents to establish the landscape context of the study area and identify elements considered of value. GIS interpolation of this information was carried out to identify any recognisable patterns of similar character across the study area under the themes of geology, landform, soils, settlement pattern and form and vegetation pattern. This identified Landscape Description Units which show detailed variations in character often not readily identifiable within field surveys. Where 4 or more attributes within landscape description units were similar they were amalgamated. Draft Policy Zones (DPZs) were produced from this.
- 14.4 Field surveys have been used to verify these findings and to enable minor adjustments to DPZ boundaries to be made based on aesthetic aspects and the visual interaction between landscape features which were not evident from the desk based study.
- 14.5 The assessment has identified 79 DPZs which all have a unique and distinctive character.
- 14.6 Each DPZ identifies and lists the key features which make it special and provides a judgement on the condition of the landscape and its strength of character. These enable judgements to be made regarding what landscape actions are required to conserve, enhance, restore or create distinctiveness within each DPZ.
- 14.7 A stakeholder engagement workshop was undertaken to gain wider views on landscape change within Greater Nottingham over the past and next 20 years. Comments regarding the character of the landscape have been incorporated into the DPZ descriptions.
- 14.8 A monitoring framework has been recommended to ensure that changes over time can be properly assessed against the DPZ descriptions included at Appendix 9 and 10 of this report.

Regional Character Area	Landscape Character Type
Nottinghamshire Coalfield	Coalfield Farmlands Village Farmlands Village Farmlands with Ancient Woodlands River Meadowlands
Magnesian Limestone Ridge	Village Farmlands Village Farmlands with Ancient Woodlands River Meadowlands Estate Farmlands
Vale of Belvoir	Village Farmlands
Nottinghamshire Wolds	Village Farmlands Village Farmlands with Ancient Woodlands River Meadowlands Meadowlands with Plantations Estate Farmlands
South Nottinghamshire Farmlands	Village Farmlands Village Farmlands with Ancient Woodlands River Meadowlands
Mid Nottinghamshire Farmlands	Village Farmlands Village Farmlands with Ancient Woodlands River Meadowlands Meadowlands with Plantations Estate Farmlands
Sherwood	Village Farmlands River Meadowlands River Meadowlands with Plantations Estate Farmlands Estate Farmlands with Plantations Wooded Farmlands Wooded Estatelands
Trent Washlands	Village Farmlands River Meadowlands
Trent Valley	Village Farmlands River Meadowlands Wooded Meadowlands

## Nottingham forces for landscape change.

A7.1 This section describes the anticipated change which may influence the character of the study area over the next 20 years.

A7.2 The information within this Appendix has been provided through interviews with relevant planning officers within each of the contributing local authorities. The interviews were held on the 25<sup>th</sup> March 2009 and included a series of questions on various themes which are likely to have the greatest influence on the landscape character of the study area. The purpose of these discussions was to identify planned changes and also trends which are occurring and likely to effect change. The topics discussed included:

- Agriculture;
- Housing;
- Major regeneration/development proposals;
- Employment;
- Infrastructure;
- Tourism;
- Minerals and waste;
- Renewable energy.

### **Gedling**

#### Agriculture

A7.28 The main focus for change is for rural diversification for use of private houses for holiday accommodation such as B&B's or holiday cottages and for the conversion of barns to either private residential or employment use. Other uses include stables and a cattery. All are relatively minor changes which would only affect landscape character on a local level.

#### Housing

A7.29 The borough has to deliver 8,000 homes over the next plan period. The Council has a relatively recent local plan which was adopted in July 2005 and therefore many of the allocations are still available for development and able to accommodate the required housing numbers.

A7.30 Many of the allocations and likely housing within the borough is close to the main urban areas around Arnold and Gedling. Many of the more rural villages are constrained by landform and control of development has previously been to ensure that the development does not extend above the ridgelines which border and screen the majority of the urban area from the wider countryside. Land to the immediate east of Gedling and Arnold is a Mature Landscape Area known as the 'Dumbles' which has previously been protected from development. Other constraints are along the River Trent which is prone to flooding.



A7.31 Villages such as Lambley are likely to only experience small-scale infill development. The SHLAA is currently assessing land allocations elsewhere across the borough such as Calverton for the potential for new housing particularly focused on 'white' sites.

A7.32 The Sustainable Urban Extension report indicated the potential for a SUE to the north of Calverton and east of Bestwood.

### Regeneration

A7.33 The Council has prepared planning briefs for the key regeneration sites within the borough. Top Wighay Farm to the north of Hucknall has the potential to accommodate 500 new dwellings. The area includes allocated land and safeguarded land to ensure that the wider landscape is not detrimentally affected by future development.

A7.34 The other main site is at Gedling Colliery which is a key regeneration site in the borough. The scheme would deliver 1,100 houses and incorporate the regeneration of the colliery spoil heap as a large area of open space, new mixed use development and access roads. The land is mostly but not entirely brownfield land; it incorporates a small pocket of farmland.

### Employment Land

A7.35 The main employment allocations are both within the existing urban areas and on former brownfield land such as Calverton and Gedling collieries. Another large allocation is to the south of water reclamation works close to Stoke Bardolph and at Teal Close.

### Infrastructure

A7.36 The main reported changes for infrastructure include Gedling Access Road which links the urban areas from Mapperley Plains to Burton Road (partly developed) along the eastern edge of the urban fringe and the A612 southern Link Road which would link the Gedling Access Road to Colwick Loop Road.

A7.37 Other future pressures reported include a new passenger rail-line from the former Gedling Colliery to the Nottingham-Grantham rail line and a new passenger rail-line and station from the RobinHood Line (near Bestwood) to Calverton; the development of an old mineral line as a recreational route; and a tram extension from Hucknall to Top Wignay Farm.

### Tourism

A7.38 The key attraction is Newstead Abbey in the northern part of the borough, the River Trent Park and existing country parks.

A7.39 Future change includes the development of a colliery park as part of the development of Gedling Colliery and local level changes and initiatives as part of Greenwood Community Forest.

### Minerals and waste

A7.40 There are current sand and gravel extractions along the Trent Valley although the majority are within Newark across the borough boundary. There may be pressure in the future for quarries along the floodplain.

A7.41 There is a current extraction site to the north of Woodland grange on Mansfield Road near Ravenshead; this may cease extraction over the next 10 years to allow restoration of the site.

### Renewable Energy

A7.42 There are few reported applications for renewable energy. Those received include an enquiry for a small single wind turbine at the Ravenshead Plant Centre but generally applications/enquiries are limited to small-scale proposals.

## APPENDIX 8: STAKEHOLDER CONSULTATION

**Table 10.3: Summary of the character type/DPZ comments**

Regional Character Area	Landscape Character Type	Characteristics	Comments
Nottinghamshire Coalfields	Coalfield Farmlands	<ul style="list-style-type: none"> <li>• Varied undulating landform</li> <li>• Closely spaced mining settlements</li> <li>• Pockets of pasture</li> <li>• Small to medium-sized fields bounded by hedgerows</li> <li>• Network of narrow winding lanes</li> <li>• Mine sites, pit heaps and disused railway lines</li> <li>• Scattered, small broad-leaved woodlands</li> <li>• Rows of red brick terrace housing</li> </ul>	<ul style="list-style-type: none"> <li>• Many small mines, older mining. Earliest coalfields have changed</li> <li>• Housing from historic mining days</li> <li>• Name maybe needs changing, coalfields are now mainly former/restored</li> <li>• Association with D H Lawrence</li> <li>• Mine sites are not as obvious now they have been largely greened. The landform of the coal tips is more obvious</li> <li>• It is a reclaimed landscape</li> <li>• There is a greater variety of housing than described; including an historic agricultural village at the core with later more modern layers of development</li> <li>• Agriculture is the dominant characteristic</li> <li>• Areas for employment</li> <li>• M1 access</li> <li>• Landscape is continuing to change</li> <li>• Fringes of Erewash Valley coalfield</li> <li>• Possibly less emphasis on mine working, one has just opened but slightly outside this area</li> <li>• Former industrial features include disused railway lines</li> <li>• Reclaimed pit sites</li> <li>• Seems broadly right, mining is now not that obvious aside from features such as winding wheels and steep sided hills – don't recognise unless know what you are looking for</li> </ul>

Regional Character Area	Landscape Character Type	Characteristics	Comments
	River Meadowlands	<ul style="list-style-type: none"> <li>Narrow alluvial floodplain</li> <li>Meandering river</li> <li>Views contained by built development and railway embankments</li> <li>Permanent pasture grazed by cows and horses</li> <li>Patches of wet grassland and marsh</li> <li>Riparian vegetation including alder and scrub</li> <li>Bushy hawthorn and willow hedges</li> </ul>	<ul style="list-style-type: none"> <li>Name change – Erewash Valley?</li> <li>Name is too general, possibly call it enclosed river meadowlands</li> <li>Key pressures are slow development, floodplain and climate change</li> <li>There are hill top settlements</li> <li>It is enclosed and intimate</li> <li>Industrial revolution area but also some undeveloped parts especially by the River</li> <li>Farming pattern is strong</li> <li>Industrial</li> <li>Strong link to Erewash</li> <li>Built development hedges in area, it is the built characteristics that make it distinctive</li> <li>Canal (Erewash) is a strong influence</li> <li>Narrow character area</li> </ul>
Magnesian Limestone Ridge	Limestone Farmlands	<ul style="list-style-type: none"> <li>Gently rolling limestone</li> <li>Productive arable farmland</li> <li>Regular pattern of larger fields bounded by hedgerows</li> <li>Large estate woodlands and belts of trees</li> <li>Wooded skylines</li> <li>Nucleated pattern of small stone villages</li> <li>Limestone buildings with orange pantile roofs</li> <li>Large self-contained mining settlements</li> <li>Mining sites with associated pit heaps and railway lines</li> </ul>	<ul style="list-style-type: none"> <li>Possibly should be examined in more detail</li> <li>Estate of Hardwick Hall cut off by old hill pit tips, highest point in Notts (man-made)</li> <li>Magnesian limestone grasslands</li> <li>Close field boundaries</li> <li>Boggy by Hucknall</li> <li>Former mining sites (Babbington colliery, Best wood)</li> <li>Maybe enhance references to location on stream</li> <li>Hucknall 'former' mining and textile – is a bit of a disservice saying it is still mining, there has been much regeneration</li> <li>Active and disused railway lines</li> <li>Linby trail – linear park</li> <li>Small-scale limestone quarrying around Linby</li> </ul>
	Limestone Fringe	<ul style="list-style-type: none"> <li>Large-scale undulating landform</li> </ul>	<ul style="list-style-type: none"> <li>Sounds approximately right is quite remote</li> </ul>

Regional Character Area	Landscape Character Type	Characteristics	Comments
		<ul style="list-style-type: none"> <li>• Strong sense of enclosure by woodland</li> <li>• Large fields framed by estate woodlands and belts of trees</li> <li>• Large enclosure pattern of medium to large fields</li> <li>• Sparsely settled</li> <li>• Large inaccessible landscape</li> </ul>	<ul style="list-style-type: none"> <li>• Heavily visited by people especially walkers and anglers</li> <li>• Possibility to change and link with farmlands</li> <li>• Woodland distinction</li> <li>• There are some paths and the area is accessible to walkers</li> <li>• Visually prominent from the M1</li> <li>• Few roads</li> <li>• Ancient woodland present</li> <li>• Deciduous woodland to the west</li> <li>• Reservoir area is quite different</li> <li>• West Hucknall is quite flat</li> <li>• Difficult to relate this across the whole area, consider a boundary change here</li> </ul>
	River Meadowlands	<ul style="list-style-type: none"> <li>• Narrow alluvial floodplain</li> <li>• Meandering river channels</li> <li>• Marginal aquatic and bankside vegetation</li> <li>• Grazing meadow with patches of wet grassland</li> <li>• Wetland trees and scrub</li> <li>• Sinuous hedgerow boundaries</li> <li>• Relic mills constructed from local limestone</li> </ul>	<ul style="list-style-type: none"> <li>• Name - Meadow/Lean?</li> <li>• Description is generally fine</li> <li>• Relic mills can be viewed from railway</li> <li>• Meanders added, more naturalistic</li> <li>• Meadows flooded</li> <li>• Coaltip influence</li> <li>• Soils richer</li> <li>• Stone construction</li> <li>• Narrow alluvial floodplain does this mean it contains this or it is?</li> <li>• Mining activities heavily landscaped out along Letch valley. Mining was also heavy in Hucknall and Linby and is prominent from the wider landscape</li> </ul>
Vale of Belvoir	Vale Farmlands	<ul style="list-style-type: none"> <li>• Large to gently undulating landform</li> <li>• Medium to large scale field patterns</li> </ul>	<ul style="list-style-type: none"> <li>• Very gently undulating</li> <li>• Grassed verges are important, there are lots of them. Important for cowslips</li> <li>• Linear villages and clustered but no common</li> </ul>

Regional Character Area	Landscape Character Type	Characteristics	Comments
		<ul style="list-style-type: none"> <li>• Vernacular style red brick farmsteads and small rural villages</li> <li>• Rural lanes, often with wide grassed verges</li> <li>• Relatively extensive areas of grassland/pasture with grazing livestock</li> <li>• Permanent pastures, sometimes with well preserved ridge and furrow</li> <li>• Scattered distribution of hedgerow trees</li> <li>• Smaller scale, more intimate landscapes adjacent to villages</li> </ul>	pattern
Nottinghamshire Wolds	Wooded Clay Wolds	<ul style="list-style-type: none"> <li>• Mildly dissected rolling plateau</li> <li>• Well-defined pattern of hedged fields</li> <li>• Filtered views created by hedgerow trees</li> <li>• Field sized plantations and larger blocks of mixed woodland</li> <li>• Pockets of permanent pasture associated with settlement</li> <li>• Isolated farmsteads and small rural villages</li> <li>• Vernacular red brick and pantile buildings</li> </ul>	<ul style="list-style-type: none"> <li>• More treed than elsewhere. Woodland concentrated here</li> </ul>
	Clay Wolds	<ul style="list-style-type: none"> <li>• Mildly dissected rolling plateau</li> <li>• Steep scarp slopes</li> <li>• Well-defined small-scale pattern of hedged fields</li> <li>• Species-rich permanent</li> </ul>	<ul style="list-style-type: none"> <li>• Wide verges often have old fashioned horse and carriage gypsies</li> <li>• Trees in hedgerows</li> <li>• Ponds</li> <li>• Ribbon development along major roads</li> </ul>

Regional Character Area	Landscape Character Type	Characteristics	Comments
		<ul style="list-style-type: none"> <li>grasslands</li> <li>Ridge and furrow</li> <li>Small rural villages</li> <li>Vernacular red brick and pantile buildings</li> </ul>	<ul style="list-style-type: none"> <li>Possible change in area of ridgeline at edge</li> </ul>
	Wooded Hills and Scarps	<ul style="list-style-type: none"> <li>Steeply sloping hills and scarps</li> <li>Numerous broad-leaved woodlands, typically on hilltops and scarp slopes</li> <li>Unimproved permanent pastures, often with patches of scrub</li> <li>Thick, often overgrown mixed hedges</li> <li>Well-defined regular pattern of hedged fields on lower slopes</li> </ul>	<ul style="list-style-type: none"> <li>Extensive views from high ground</li> <li>Low ground – transport routes, connect low ground and high ground</li> <li>South facing slopes - agriculture</li> </ul>
	Village Farmlands	<ul style="list-style-type: none"> <li>Low hills and markedly rolling landform</li> <li>Well-defined pattern of medium sized hedged fields</li> <li>Traditional pattern of mixed farms</li> <li>Localised areas of well-wooded landscape</li> <li>Pockets of pasture with mixed hedgerows around settlement</li> <li>Narrow valleys with unimproved pastures and wet meadows</li> <li>Historic pattern of small red brick villages and farmsteads</li> </ul>	<ul style="list-style-type: none"> <li>Halls and associated parkland</li> <li>Pasture is mostly semi-improved, unimproved pasture is very scarce. Speak to Bio-Records. Unimproved pastures tend to be managed more traditionally, check SINC data for this.</li> <li>Modern settlement but main centre visible</li> <li>Stanford Hall property is used as a retirement village</li> </ul>
South Nottinghamshire Farmlands	Alluvial Levels	<ul style="list-style-type: none"> <li>Flat low-lying land</li> <li>Seasonally wet alluvial &amp; peaty soils</li> </ul>	<ul style="list-style-type: none"> <li>Modern agriculture</li> </ul>

Regional Character Area	Landscape Character Type	Characteristics	Comments
		<ul style="list-style-type: none"> <li>• Open, spacious view, sometimes enclosed by rising ground</li> <li>• Remnant pattern of large field defined by thorn hedgerows or ditches</li> <li>• Small broadleaved woodlands</li> <li>• Absence of farmsteads or other buildings</li> </ul>	
	Village Farmlands	<ul style="list-style-type: none"> <li>• Gently rolling farmland</li> <li>• Simple pattern of large arable fields</li> <li>• Neatly trimmed hawthorn hedgerows</li> <li>• Nucleated villages with traditional red brick and pantile roofed buildings</li> <li>• Suburbanised commuter villages and small towns</li> <li>• Small-scale pastoral landscapes along village edges</li> </ul>	<ul style="list-style-type: none"> <li>• Pockets are more steeply sloping and pronounced than others – close to urban areas</li> <li>• Bunny old wood and community woodland at Cotgrave. Scattered woodlands</li> <li>• Airfields – query over how prominent they are</li> </ul>
Mid-Nottinghamshire Farmlands	Dumble Farmlands	<ul style="list-style-type: none"> <li>• Steeply rolling landscape</li> <li>• Well-defined pattern of hedged fields</li> <li>• Meandering tree-lined dumble valleys</li> <li>• Mixed agriculture</li> <li>• Scattered small woodlands</li> <li>• Expander commuter settlements and small traditional villages</li> <li>• Busy commuter roads and quiet country lanes</li> <li>• orchards</li> </ul>	<ul style="list-style-type: none"> <li>• Pressures are that rainfall is not absorbed well, garden centres, recreation pressures and loss of hedgerows</li> <li>• Bring out the distinctive landscapes unique to this area</li> <li>• Small valleys and associated ridgelines</li> <li>• Small streams</li> <li>• Development pressures less as is quite steep</li> <li>• Commuter settlements are well defined</li> <li>• Very attractive</li> <li>• Calverton – development</li> <li>• Burton Joyce – expansion</li> </ul>



Regional Character Area	Landscape Character Type	Characteristics	Comments
			<ul style="list-style-type: none"> <li>• Others have green belt</li> <li>• Geology, steep drop to watercourses</li> <li>• Further east less apparent land form changes. Close to Notts and around Lambley</li> <li>• It is mostly grazing</li> <li>• Orchards are not necessarily apparent. Can only think of one as leave Nottingham</li> <li>• Rolling land flattens on ridge top, Mapperley lodge – changes in character slightly</li> <li>• Fringes more crop based, higher land more grazing</li> <li>• Incised valleys</li> <li>• Burton Joyce, solid ridge less defined by watercourses. Crop based compared to others</li> <li>• Development is extending out</li> <li>• Lots of garden centres</li> <li>• Lambley eastwards is slightly different, it is a valley landscape.</li> </ul>
	River Meadowlands	<ul style="list-style-type: none"> <li>• Flat, alluvial floodplains</li> <li>• Sparsely settled with few buildings</li> <li>• Permanent pasture and areas of mixed agriculture</li> <li>• Small-scale, semi-irregular pattern of hedged fields</li> <li>• Wetland trees and shrubs</li> <li>• Tradition of willow pollarding</li> <li>• Clumps of deciduous trees and small woods</li> <li>• Ridge and furrow present</li> </ul>	<ul style="list-style-type: none"> <li>• Possible name change to Dover Beck</li> <li>• Settlement on terraces</li> <li>• Attractive corridor</li> <li>• Does sparsely settled not imply that there are few buildings? Queried the validity of this statement</li> <li>• Alder and willow are characteristic</li> <li>• Evidence of pollarding</li> <li>• Ridge and furrow may still be there? Check with Historic LCA</li> </ul>
Sherwood	Forest Sandlands	<ul style="list-style-type: none"> <li>• Dissected undulating landform</li> </ul>	<ul style="list-style-type: none"> <li>• Possibility to link with settled sandlands</li> </ul>

Regional Character Area	Landscape Character Type	Characteristics	Comments
		<ul style="list-style-type: none"> <li>• Frequent views of wooded skyline</li> <li>• Heathy character with bracken. Gorse and broom common</li> <li>• Geometric pattern of large-scale arable fields</li> <li>• Planned layout of straight roads</li> <li>• Neatly trimmed hawthorn hedges</li> <li>• Large pine plantations</li> <li>• Mining settlements and associated spoil heaps</li> <li>• Scrubby semi-natural woodland and heaths with ancient stag headed oaks</li> </ul>	<ul style="list-style-type: none"> <li>• Ravenshead – 1960 development with some smaller villages</li> <li>• Key pressures are restoring heathland, agricultural pressure, Sherwood forest regional park extends down and valued recreational landscape</li> <li>• States heathy character but there is a lack of heather and only small amounts of bracken. Broom is rare and possibly needs protection to increase areas where it has been eroded</li> <li>• Hedgerows are gappy</li> <li>• Large pine plantations are shooting country</li> <li>• Possibly remove reference to mining settlements and associated spoil heaps</li> <li>• Dispersed settlement</li> <li>• Dissected undulating landform is less evident</li> <li>• Closer to Nottingham there is also a slight change in the landform</li> <li>• Historic parks and gardens and some views between estates</li> <li>• Historic deer park</li> <li>• Sandstone quarrying near Best Wood lodge of A60 mostly mining to north of study area</li> <li>• 'Former' mining area</li> <li>• Stag headed oaks are predominantly further north, this area is lacking ancient oaks (semi-natural oak/birch wood)</li> <li>• Annesely/Newstead, estate reference</li> <li>• There is little heathland however it does have some characteristics with gorse and broom on road</li> <li>• Heathland has largely been eroded by agriculture, should look to reinstate where</li> </ul>

Regional Character Area	Landscape Character Type	Characteristics	Comments
			<p>possible</p> <ul style="list-style-type: none"> <li>• Landform doesn't undulate as much here</li> <li>• Scrub woodland along A614, birch woodland at roadside</li> <li>• Clearance could have a big impact on this area</li> </ul>
Trent Washlands	River Valley Wetlands	<ul style="list-style-type: none"> <li>• Actively worked areas with disturbed ground and dry voids</li> <li>• Flooded workings and large areas of open water</li> <li>• Wetland habitat at different stages of maturity</li> <li>• Recreation focussed on water sports and country parks</li> <li>• Areas of restored agriculture, often poorly landscaped</li> </ul>	<ul style="list-style-type: none"> <li>• Attenborough Nature Reserve</li> <li>• Nature conservation more so than country park</li> <li>• Holme Pierrepont – significant village/listed village</li> </ul>
	Terrace Farmlands	<ul style="list-style-type: none"> <li>• Broad flat river terraces</li> <li>• Regular field pattern often becoming large and open</li> <li>• Hedgerow trees main tree cover, ash predominant</li> <li>• Willow pollards</li> <li>• Mostly arable, pasture around settlements</li> <li>• Nucleated villages with traditional red brick and pantile roof buildings</li> <li>• Large power stations</li> <li>• Sand and gravel quarries</li> </ul>	<ul style="list-style-type: none"> <li>• Links to Erewash</li> <li>• Large power stations are out of the area</li> <li>• Power station is Ratcliffe on Soar</li> <li>• No power station references in text but is a prominent feature</li> <li>• Perhaps this should be merged with River Meadowlands but would need to consider the distinction in settlement pattern</li> <li>• Concentrated area with water uses</li> <li>• Lake of water sports centre not so natural – artificial landscape</li> <li>• High water use for amenity</li> <li>• Can't see the watercourse centre</li> <li>• Sand and gravel quarries in some instances are still being worked whilst others have been restored. Created a series of wetlands. Landfill (PFA) was used to restore the land to farmlands however, ran out of PFA so rest is now restored</li> </ul>

Regional Character Area	Landscape Character Type	Characteristics	Comments
			to wetlands and ponds – nature reserves/marinas
	Alluvial Estatelands	<ul style="list-style-type: none"> <li>• Flat landform with a few low hills</li> <li>• Numerous block of small-scale deciduous and mixed woodlands</li> <li>• Intensively managed arable farmland</li> <li>• Large historic hall in ornamental setting</li> <li>• Permanent pasture with mature parkland trees</li> <li>• Estate cottages and lodge houses</li> </ul>	<ul style="list-style-type: none"> <li>• Doesn't belong in Alluvial, agree it is more consistent with the more rolling landscape to the South</li> </ul>
	River Meadowlands (a and b)	<ul style="list-style-type: none"> <li>• Meandering river channel, often defined by flood banks</li> <li>• Sparsely populated with few buildings</li> <li>• Permanent pasture and flood meadow</li> <li>• Steep wooded bluffs</li> <li>• Willow holts</li> <li>• Long sinuous hedges</li> <li>• Pollarded willows</li> <li>• Regular pattern of medium to large arable fields</li> <li>• Evidence of increasing field size</li> <li>• Frequent hedgerow trees</li> </ul>	<ul style="list-style-type: none"> <li>• A more explanatory name. A and B is not instructive</li> <li>• Villages are small and on high spots</li> <li>• Archaeological significance of valleys</li> </ul>

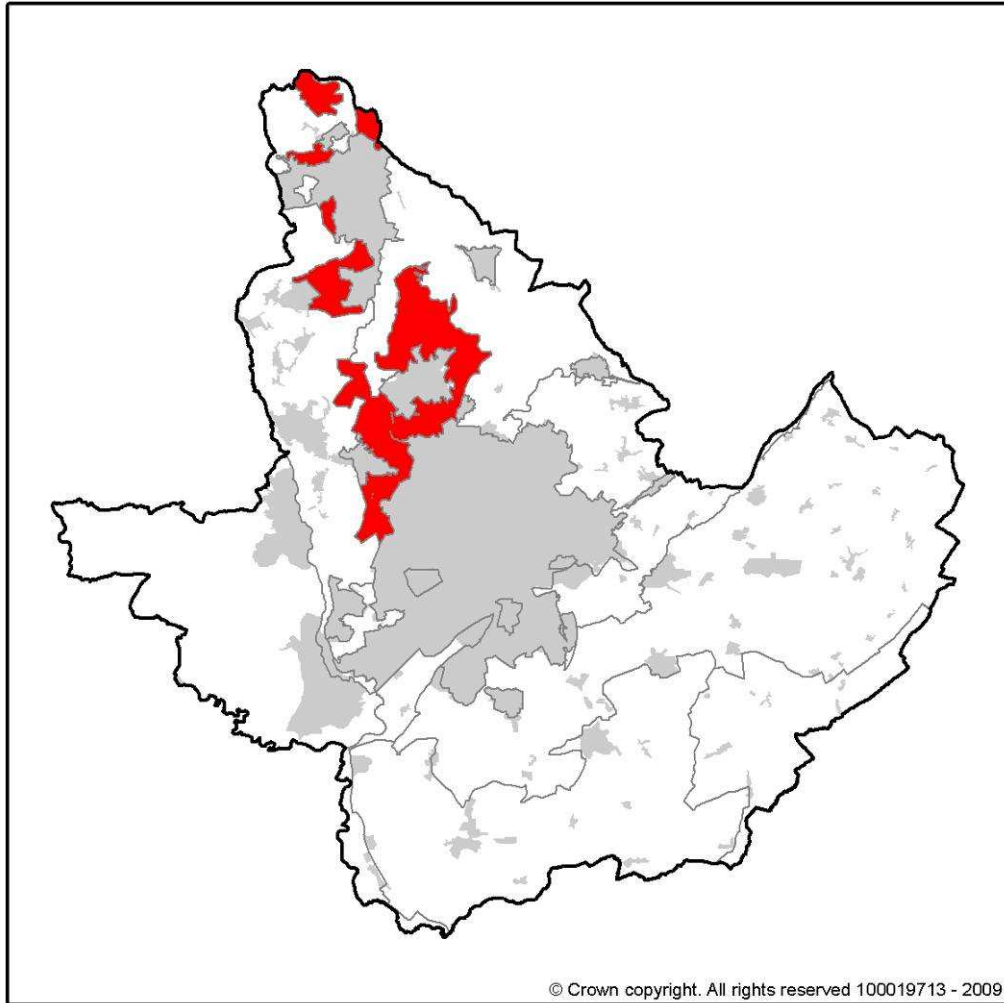
---

# APPENDIX 9

---

# MAGNESIAN LIMESTONE RIDGE

---



**DPZ within this Regional Character Area:**

<b>ML017</b>	<b>Linby Wooded Farmland</b>
<b>ML018</b>	<b>River Leen Corridor</b>

# MAGNESIAN LIMESTONE RIDGE

---

## Key Characteristics

- Narrow limestone ridge never more than a few miles wide extending from Nottingham toward Ripon in Yorkshire;
  - Narrow belt of Permian rocks comprising two divisions,; the Magnesian Limestone and Permian Marl;
  - The hard Magnesian limestone determines the distinctive landform whilst areas of softer marl (predominately red clays) have a more subdued relief;
  - Low escarpment dipping gently eastwards under overlying Triassic sandstones, whilst the western slope is defined by a steep irregular profiled scarp slope (profile caused by small streams);
  - Productive free draining calcareous soils developed on limestone and less productive soils on Permian Marl which often are subject to waterlogging;
  - In the north, pronounced dip slope which forms a series of rolling summits the highest being 200mAOD at Huthwaite; to the south where limestone is thinner the relief is less pronounced;
  - Deep valleys present along western slopes where streams have cut into the underlying coal measures;
  - Coalfield influences are evident with large mining settlements and associated restored pit heaps;
  - Regular dispersal of large estates, enclosed commons and small rural villages often containing locally distinctive limestone buildings;
  - Modern settlements contain older stone centres, red brick terraces and newer suburban development;
  - Distinctive villages such as Linby, Papplewick and Teversal using local pinkish-yellow limestone in building construction;
  - Well-defined pattern of hedged fields and large estate woodlands;
  - Regular pattern of medium to large scale fields mostly used for intensive arable farming;
  - Hedgerows are the common field boundary although stone walls are present on higher land;
  - Small pockets of surviving unenclosed commons and older enclosure smaller semi-regular fields is evident around villages;
  - On lower lying land a strong sense of enclosure and seclusion is created through the combination of woodland, coverts, parkland and tree belts and a lack of public access;
  - On higher land there are extensive views towards the Derbyshire Coalfield; and
  - In places the land is less enclosed by trees and landform and is more open in character; in contrast around Annesley Woodhouse woodland is more prominent and provides a strong sense of enclosure.
-

## Guidelines and Recommendations

- Conserve the nucleated pattern of rural settlements and ensure new buildings reflect the local vernacular;
  - Conserve the internal open space, such as village greens, gardens and paddocks and irregular outline of villages;
  - Conserve the frequency and character of farmsteads within settlements;
  - Conserve and strengthen the traditional pattern of hedged fields;
  - Identify opportunities for enhancing ecological diversity;
  - Initiate schemes for large-scale woodland planting to contain and soften urban development;
  - Conserve and restore the integrity of historic estate lands;
  - Restore the special character of the alluvial grasslands;
  - Conserve river valley woodlands and encourage the creation of new woodland;
  - Retain and enhance the diversity of the river channel and bankside vegetation;
  - Promote riverside tree planting to strengthen the continuity of the river corridors;
  - Conserve all ancient woodland sites; and
  - Conserve the pastoral character of meadows along the river banks.
-

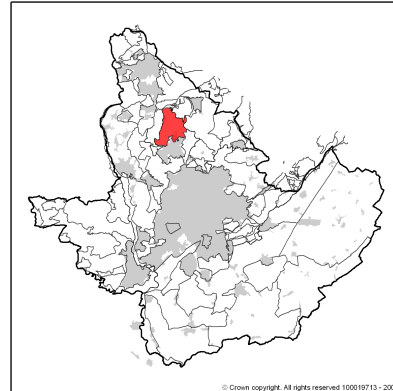


## ML017 Linby Wooded Farmland



### CONTEXT


Regional Character Area: Magnesian Limestone Ridge  
LDU reference: 358  
DPZ Reference: ML017



### CHARACTERISTIC FEATURES

- Flat to gently undulating natural land although restored mineral working sites create artificial elevations in the landform
- Small streams flow through the area and there are some small, artificial water bodies in the north of the area, on restoration land
- The DPZ has an urban fringe farmland character, influenced by restored land, agricultural and pockets of recreation land
- The urban fringe of Hucknall does not have a strong influence on the area, despite its close proximity, because of woodland and dense hedgerows.
- Field sizes are medium to large and usually irregular in shape
- Hedgerows are often fragmented and are low and scrubby in places
- Large woodland blocks enclose pockets of farmland
- New areas of plantation and regenerating scrub on restored landscapes will add to the woodland content of the area as they mature
- Woodland belts follow the linear features through the landscape, such as the railway embankment, the streams and roads
- An avenue of trees lines Station Avenue from Newstead village to Newstead Abbey
- The extensive woodland blocks at Newstead Abbey and Annesley Plantation are visible in the adjoining DPZ areas and contribute to the wooded character
- The settlement of Newstead has a clear mining heritage and is characterised by rows of uniform red brick terraced housing
- The settlement of Linby has an older rural character; the properties are a mix of small terraces and cottages and large, detached properties. They often use local stone as a key building material and have red pantile roofs
- The Gatehouse of Newstead Abbey adjacent to the restored colliery spoil heaps forms a distinctive interesting feature in the landscape
- Large industrial warehouses are a feature on the edge of the settlements
- Large redbrick isolated farmsteads are dispersed through the landscape and are often surrounded by large outbuildings, or in some cases, caravan sites, although these are often well screened from view
- Overhead power lines are a common feature crossing the farmland
- Views are open over the farmland but restricted and enclosed by the blocks of woodland
- There are long views from the recreational footpaths which cross the restored colliery mounds over the young woodland and the farmland beyond



LANDSCAPE ANALYSIS																			
<p><b>Condition</b></p> <p>The landscape is characterised by flat and open farmland enclosed by pockets by woodland blocks. Artificial hills where the mining landscape has been restored are prominent features. The DPZ has an urban fringe and restored land character. The urban fringe of Hucknall is visible in the south of the area. Infrastructure routes, such as the A611, the railway and overhead electricity lines have an urbanising influence on the farmland through the area.</p> <p>The land use is agricultural, predominantly arable. The field sizes are large and the field pattern is irregular. The historic field pattern has been lost and a modern, modified field pattern now exists. There are areas of historic woodland associated with Newstead Abbey in the area. The mining heritage in the landscape is evident through the built form, distinctive landform and mining relicts. The historical association with Newstead Abbey is evident in the stone buildings, avenues of trees and views to extensive deciduous woodland.</p> <p>There are several large blocks of woodland in this area which give an enclosed character to the DPZ. These include Aldercar Wood and Quarry Banks. There are large areas of young plantation woodland on restored landscape adjacent to Newstead which will mature and increase the woodland content of the DPZ further. There are few hedgerows trees and hedgerows are often fragmented; consequently the landscape appears open and expansive between the woodland blocks.</p> <p>The condition of the landscape is <b>MODERATE</b>. There is evidence of fragmenting hedgerows and in places hedgerows have been removed to form larger fields. There is clear evidence of landscape restoration on the ex-mining areas which is improving the condition of the area, however, the planting is young and the landform is clearly artificial and there is still potential for improvement and greater integration into the landscape.</p>																			
																			
<p><b>Landscape Strength</b></p> <p>The zone of visual influence is limited in this DPZ by woodland blocks within the area and in the surrounding landscape. There are views over the DPZ from the high points on the restored spoil heaps and there are views through the character area from the A611, but it is otherwise an enclosed landscape from which it is difficult to view the landscape from the publicly accessible routes.</p> <p>The landscape has a <b>MODERATE</b> character strength. The pockets of farmland enclosed by woodland blocks do not have a unique character although features are regularly distributed. The restored landscapes and the mining heritage visible in the landscape contribute to the sense of place, as do stone buildings associated with Newstead Abbey Estate. The character is slightly disjointed due to the high number of separate influences which reduces character strength.</p>																			
<table border="1"> <tr> <td rowspan="3">Landscape Condition</td> <td>Good</td> <td><b>MODERATE</b> Enhance</td> <td><b>MODERATE - GOOD</b> Conserve and Enhance</td> <td><b>GOOD</b> Conserve</td> </tr> <tr> <td>Moderate</td> <td><b>POOR - MODERATE</b> Enhance and Restore</td> <td><b>MODERATE</b> Enhance</td> <td><b>MODERATE - GOOD</b> Conserve and Enhance</td> </tr> <tr> <td>Poor</td> <td><b>POOR</b> Restore/Create</td> <td><b>POOR - MODERATE</b> Enhance and Restore</td> <td><b>MODERATE</b> Enhance</td> </tr> <tr> <td colspan="2"></td> <td>Weak</td> <td>Moderate</td> <td>Strong</td> </tr> </table> <p style="text-align: center;">Landscape strength</p> <p>The overall landscape strategy is <b>ENHANCE</b></p>		Landscape Condition	Good	<b>MODERATE</b> Enhance	<b>MODERATE - GOOD</b> Conserve and Enhance	<b>GOOD</b> Conserve	Moderate	<b>POOR - MODERATE</b> Enhance and Restore	<b>MODERATE</b> Enhance	<b>MODERATE - GOOD</b> Conserve and Enhance	Poor	<b>POOR</b> Restore/Create	<b>POOR - MODERATE</b> Enhance and Restore	<b>MODERATE</b> Enhance			Weak	Moderate	Strong
Landscape Condition	Good		<b>MODERATE</b> Enhance	<b>MODERATE - GOOD</b> Conserve and Enhance	<b>GOOD</b> Conserve														
	Moderate		<b>POOR - MODERATE</b> Enhance and Restore	<b>MODERATE</b> Enhance	<b>MODERATE - GOOD</b> Conserve and Enhance														
	Poor	<b>POOR</b> Restore/Create	<b>POOR - MODERATE</b> Enhance and Restore	<b>MODERATE</b> Enhance															
		Weak	Moderate	Strong															
<p><b>LANDSCAPE ACTIONS</b></p> <p><i>Landscape features</i></p> <ul style="list-style-type: none"> <li>Enhance the condition of the hedgerows through replacement planting where fragmentation is occurring</li> <li>Enhance the landscape pattern through replacement of hedgerows where they have been lost</li> <li>Enhance the condition of the woodlands through maintenance and management</li> <li>Enhance mining spoil heap restoration through more tree planting to help integrate them into the landscape</li> <li>Conserve the hedgerow trees where they exist and increase their number through new planting where appropriate, particularly along roads and around arable fields</li> <li>Conserve the distinctive avenue of trees along Station Avenue</li> <li>Conserve the form and character of historic woodland associated with Newstead Abbey Estate</li> </ul> <p><i>Built form</i></p> <ul style="list-style-type: none"> <li>Enhance the mining heritage in the settlement of Newstead through conservation of the relics of mining machinery and provision of landscape history interpretation</li> <li>Enhance the urban fringes through planting to soften and filter views to the urban edges</li> <li>Conserve the traditional village character of Linby through use of similar building styles and materials in any new development</li> <li>Conserve and enhance the landscape vegetation which filters views to Hucknall urban fringe as it contributes to separation between Hucknall urban area and the DPZ</li> </ul> <p><i>Other development/ structures in the landscape</i></p> <ul style="list-style-type: none"> <li>Conserve the wooded nature of the railway line</li> <li>Ensure any future infrastructure developments do not contribute to a significant cumulative impact</li> <li>Conserve and enhance viewpoints on the colliery mounds to enable views across the DPZ</li> </ul>																			

## ML018 River Leen Corridor



### CONTEXT

Regional Character Area: Magnesian Limestone Ridge  
LDU reference: 451  
DPZ Reference: ML018



### CHARACTERISTIC FEATURES

- Low lying land with a flat to gently undulating landform
- The River Leen flows through the area and there are a series of small pools and lakes adjacent to the river, although these features are not openly apparent in the landscape
- Mill Lake is a feature of Bestwood Country Park in the south of the area although this is only locally apparent because of the surrounding woodland
- The area is located between the urban fringes of Hucknall and North Nottingham but woodland, hedgerows and scrubby vegetation often filters views to the urban edges
- Land use is predominantly mixed farming, although there are large areas of rough grassland, recreation land and an airfield which is now a testing area for Rolls Royce
- Pasture is common adjacent to the river, with arable fields on higher ground away from the river
- Areas of recreation land are also common including the area around Mill Lake, two golf courses and a recreation centre
- The historic field pattern has been lost and a modern and modified pattern now exists across most of the area, although there are small patches of semi-regular field patterns and strips of historic woodland
- The field pattern is medium sized and fields are geometrically shaped, with larger fields to the north
- Field boundaries are predominantly hedgerows, although timber and post and wire fencing is also common, especially in grazing areas
- Where hedgerows exist they are often fragmented, scrubby and low giving the farmland an open character
- Hedgerow trees are not numerous but there is evidence of planting of new trees in some areas which will increase in significance as they mature
- Woodland is characteristically linear in this DPZ as it follows features such as the urban edges, a disused railway line which passes through the area and the river
- Woodland and riparian, scrubby vegetation is common along the river and around the pools and lakes
- Closely managed linear woodland is a feature of the golf courses
- The disused airfield consists of a wide expanse of rough grassland surrounded with a scattering of industrial warehouses, which are not visible in the wider landscape due to surrounding woodland
- The DPZ is surrounded by settlements including Hucknall, Nottingham and Bestwood Village
- The low lying nature of the land and the wooded nature of the area means the urban edges are not significant features
- There is some ribbon development along the B road through the area which has a localised urbanising impact
- Two wood pole electricity lines and lighting columns form vertical features which are visible in the landscape
- Views within the DPZ are open across the farmland but often enclosed by linear woodland around the water bodies, golf course and disused railway line
- There are views to rising land and woodland in adjacent DPZs
- There are longer views from Forest Lane in the north of the area across the farmland and to the woodland on rising ground in adjacent DPZs



**LANDSCAPE ANALYSIS**

**Condition**

This is an urban fringe DPZ which is low lying and influenced by linear features such as the River Leen, the disused railway line, the disused airfield and roads. Hydrological features including the River Leen, Mill Lake and other pools and lakes are influential features in this DPZ, although they are not highly visible due to the associated woodland and riparian vegetation which encloses them.

Farming, rough grassland and recreational land are all common land uses in this DPZ. There is a mix of arable and pasture land with larger arable fields common on higher ground. Timber fencing or post and wire fencing is common around pasture fields where hedgerows have been removed or are fragmented. Hedgerows which exist are often low and scrubby. The historic field pattern has generally been lost due to field size expansion and changing agricultural practice.

The woodland is characteristically linear in this DPZ. Deciduous woodland and riparian vegetation follow the River Leen and dense scrubby vegetation follows the line of the disused railway. Linear woodland also characterises the golf courses. Dense deciduous woodland borders Mill Lake in Bestwood Country Park and there is an area of parkland and woodland to the south of the airfield.

The condition of the landscape is **MODERATE**. The hedgerows are often fragmented and scrubby or have been removed completely. The landscape in the recreational areas is well managed and generally in good condition, which increases the overall judgement to moderate.



**Landscape Strength**

The zone of visual influence is limited in this DPZ. It is a low-lying, enclosed landscape and there are few views over the hydrological features, other than from public rights of way which pass close by. There are longer views across farmland from Forest Lane in the north of the area. There are views out to the rising land to the south and east, where woodland blocks on the ridgelines are features in the views.

Overall the strength of character is **MODERATE**. There are few distinctive characteristics or significant features through the farmland to give the area a strong sense of place. The river, lakes and pools contribute to the sense of place, although they are not highly visible. Urbanising features such as overhead lines, the airfield and lighting columns weaken the landscape pattern which has an effect on the overall landscape character strength.

	<b>MODERATE</b> <i>Enhance</i>	<b>MODERATE - GOOD</b> <i>Conserve and Enhance</i>	<b>GOOD</b> <i>Conserve</i>
<b>Good</b>			
<b>Moderate</b>	<b>POOR - MODERATE</b> <i>Enhance and Restore</i>	<b>MODERATE</b> <i>Enhance</i>	<b>MODERATE - GOOD</b> <i>Conserve and Enhance</i>
<b>Poor</b>	<b>POOR</b> <i>Restore/Create</i>	<b>POOR - MODERATE</b> <i>Enhance and Restore</i>	<b>MODERATE</b> <i>Enhance</i>
	<b>Weak</b>	<b>Moderate</b>	<b>Strong</b>
	<b>Landscape strength</b>		

The overall landscape strategy is **ENHANCE**

**LANDSCAPE ACTIONS**

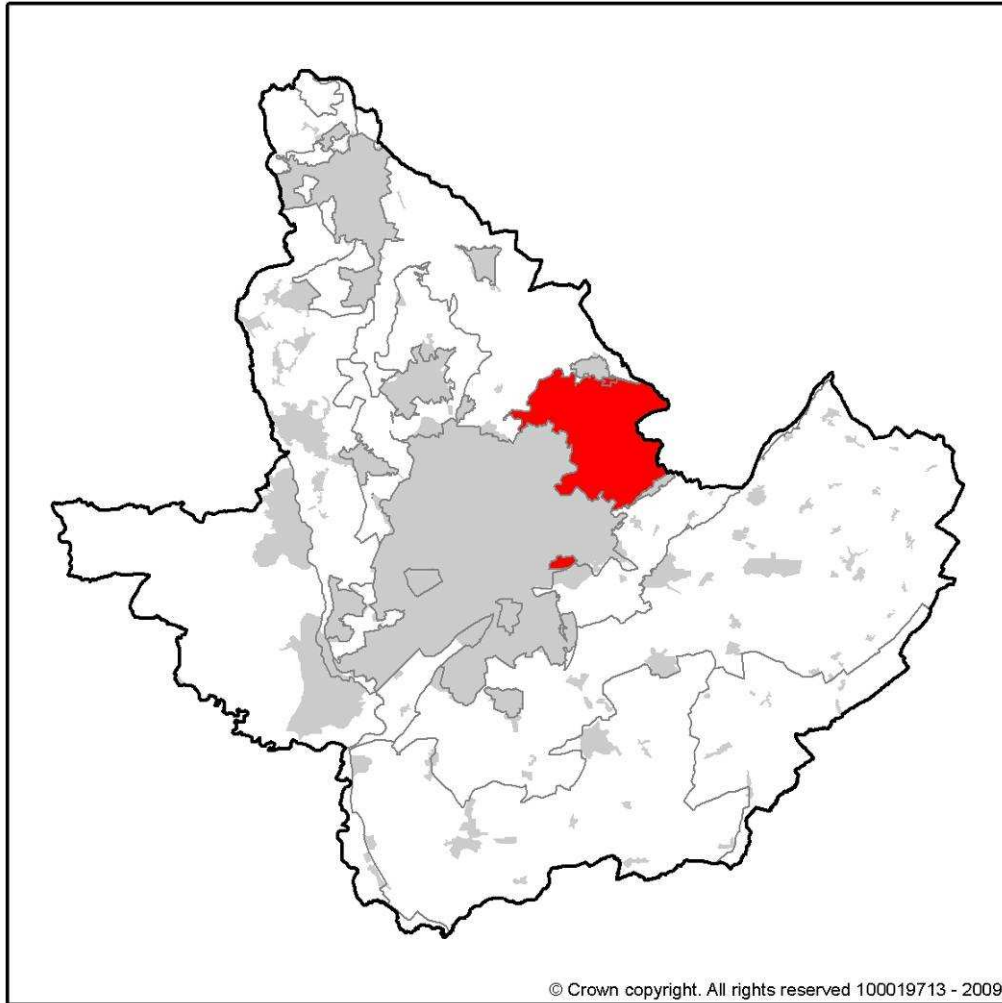
*Landscape features*

- Enhance the condition of existing hedgerows through new planting and careful management
- Create new hedgerows to replace those which have been lost in the past and encourage planting along lines of existing fencing
- Enhance the tree cover through planting of more hedgerow trees especially around arable fields
- Conserve and enhance belts of linear woodland which are characteristic of the area
- Conserve the parkland character around Mill Lake and in the area to the south of the airfield
- Enhance the woodland planting around the urban edges to enhance an increasing rural character to the area
- Enhance the condition of the grazing land through replacement of post and wire fencing with timber fencing, or hedgerows where possible

- Conserve and enhance riparian woodland along the river and around the pools and lakes through continued management
- Built form*
- Conserve the areas of countryside through resisting further ribbon development along the roads
  - Conserve the nucleated character of the settlements by placement of any new development in existing villages and settlements
- Other development/ structures in the landscape*
- Enhance the landscape condition through screening of vertical elements, such as lighting columns, by roadside tree planting to reduce urbanising effects of these features

# MID-NOTTINGHAMSHIRE FARMLAND

---



**DPZ within this Regional Character Area:**

- MN013**      **Gedling Colliery Green Space**
- MN014**      **Woodborough Sloping Farmland**
- MN015**      **Dumbles Rolling Farmland**

# MID-NOTTINGHAMSHIRE FARMLAND

---

## Key Characteristics

- Geology is formed by a broad belt of Triassic rocks of two formations: Waterstones and Mercia Mudstone;
  - Mercia Mudstone comprising stratified reddish mudstones and occasional bands of hard sandstone (skerries) give rise to a low rolling escarpment sloping gently eastwards;
  - Waterstones are thinly bedded sandstones and siltstones separated by thin layers of mudstone which form gentler lower slopes of the escarpment with undulations formed where skerries exist creating the distinctive landform particularly around Cockpit Hill;
  - Dark brown stoney clay loam and clay soils are common with dark reddish sandy loam silts on Mercia Mudstone;
  - Deep ravines and small waterfalls created by streams cutting through Mercia Mudstone have exposed the underlying Waterstones;
  - Small streams and tributaries within narrow ravines up to 10m deep known as 'The Dumbles' are present in the south of the area;
  - Remote rural character created through a the lack of larger settlements although urban commuter villages are common in the south of the area;
  - Villages accessed by a network of small winding rural lanes and tracks;
  - Red brick and pantile roofed buildings are common within small rural villages;
  - Industry is infrequent in the area although former colliery spoil heaps at Gedling, Calverton and Bilsthorpe are prominent;
  - Frequent leisure facilities such as garden centres and golf courses have an urbanising influence on the southern part of the area;
  - Arable farming is predominant although pastoral landscapes are frequent along villages fringes and around 'V'-shaped valleys within the Dumbles;
  - Generally a well-defined semi-irregular field pattern with hedged fields although the pattern becomes eroded to the north where fields have been expanded for arable farming;
  - Ash and oak hedgerow trees are of localised importance;
  - Strong sense of enclosure created through frequent woodlands, hedgerows, hedgerow trees; pockets of pastoral parkland and wooded streams;
  - Distinctive mature woodlands along streams and on higher ground;
  - Remnant orchards are present around smaller villages and older farmsteads, often set within pasture;
  - Large valleys of Dover Beck and Greet cross the landscape characterised by low-lying flat land, enclosed pasture, pollarded willow and pockets of ridge and furrow; and
  - Generally well-wooded and enclosed landscape although it becomes more open in areas of concentrated arable farming where field size is larger and hedgerows are maintained at a low height.
-

# MID-NOTTINGHAMSHIRE FARMLAND

---

## Guidelines and Recommendations

- Conserve and strengthen the traditional rural character;
  - Conserve the historic pattern of hedges and fields;
  - Conserve the nucleated settlement pattern of red brick villages;
  - Conserve village edge pastoral landscapes;
  - Conserve and where possible restore old orchards particularly close to farmsteads and villages;
  - Conserve and enhance the character and diversity of the ancient woodlands;
  - Identify opportunities to strengthen the existing level of woodland and hedgerow cover;
  - Conserve and strengthen the visual and ecological continuity of stream corridors;
  - Conserve the wooded character of Dumble streams and adjacent pastoral land;
  - Conserve the continuity of the Dumbles through replacement tree planting;
  - Promote better integration of new development into the countryside;
  - Conserve the sparsely populated character of the area;
  - Retain and enhance river channel diversity;
  - Conserve riparian trees and woodland; and
  - Conserve the pastoral character of parkland landscapes and ensure a programme for replacement of ornamental parkland tree planting.
-



## MN013 Gedling Colliery Green Space



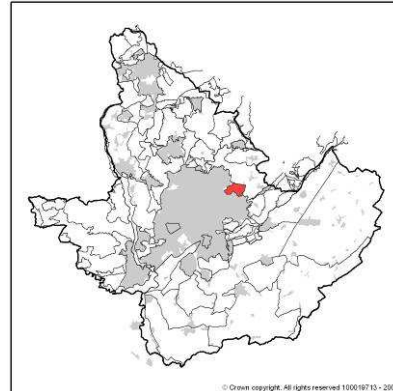
### CONTEXT

Regional Character Area: Mid-Nottinghamshire

Farmland

LDU Reference: 310, 311, 313

DPZ Reference: MN013



### CHARACTERISTIC FEATURES

- The artificial rising landform is formed by the restored colliery spoil heap and is a significant feature in this landscape
- The surrounding landscape is gently sloping and rises sharply within the adjacent urban area
- Numerous small water bodies have formed on the restored land as drainage features and the former colliery settles. These are now becoming naturalised
- The character of the area is urban fringe green space
- Amenity grassland is the predominant land cover as the area includes sports pitches and a golf course with some rough grassland
- Agricultural land is present as a pocket along Arnold Lane in linear strips of irregularly shaped fields with mature tall field boundaries
- Woodland is predominantly linear, with woodland belts through the golf course, bordering the recreation ground, mature belts along the roads and along a disused railway track
- Strips of young plantation woodland are common around the base of the restored colliery mound and areas of naturally establishing woodland
- Poplar trees are common in the woodland belts. There are strips of ornamental conifer planting in the golf course but species are predominantly deciduous elsewhere
- The urban fringe of Arnold borders the area to the west and housing in Carlton is visible on rising land to the south
- The church spire in Gedling forms a local feature on the south eastern boundary of the site surrounded by built form
- There is no settlement within the DPZ but the style of development along the boundaries is modern red brick residential development
- The restored colliery mound is covered by many informal tracks and there are long views out from these over the surrounding agricultural landscape across much of Rushcliffe to Belvoir Ridge, the Leicestershire Wolds and Ratcliffe on Soar power station
- The A6211, which passes through the DPZ, is a busy route into the city and busy roads border the DPZ to the north and east



**LANDSCAPE ANALYSIS**

**Condition**

This DPZ is characterised by amenity grassland and recreational land. The most prominent feature is the large, steep sided colliery spoil heap which has now been restored to grassland and is used informally for recreation. A large square of amenity grassland lies adjacent and includes sports pitches and a play ground. A golf course lies to the south of the A6211 and the landscape is characterised by highly managed grassland and woodland strips. Linear strips of farmland lie adjacent to the roads. The field pattern is irregular and the fields are rough grassland or grazing land. The historic pattern of the area has changed considerably over time and has been strongly influenced by the previous industrial land use of the area. The historic field pattern no longer exists. The condition of the landscape has been improved through restoration of the area to grassland, but the legacy of the previous land use is still highly visible in the landscape due to the obviously artificial character of the raised ground.



Linear strips of woodland characterise this DPZ. There is a large strip of deciduous woodland to the south of the restored land. This has been extended with plantation woodland which is presently still young. The recreation ground is enclosed by planted woodland strips; poplar trees are common. Dense scrub and linear woodland follows the disused railway line. Strips of young planting cover the restored mound and include a variety of native species.

The landscape condition is **MODERATE**. The restored landscape has improved the previous industrial condition, but is still a rough, immature landscape which contrasts with the surrounding landscape. It will integrate into the landscape as the woodland matures.

**Landscape Strength**

The DPZ is highly visible in the landscape because of the landform. The former colliery mound rises higher than any of the land surrounding it and marks the location of this DPZ in the wider landscape. This mound is important in screening views to the urban edge from the wider landscape. Mature woodland on the northern edge reduces its prominence in the countryside to the north. The other areas of amenity grassland and farmland are on lower land enclosed by woodland and urban edges and as such are not visible in the wider landscape. From within the DPZ, there are long views over the surrounding countryside and urban areas from the informal footpaths across the restored land.

Landscape Condition	Good	<b>MODERATE</b> <i>Enhance</i>	<b>MODERATE - GOOD</b> <i>Conserve and Enhance</i>	<b>GOOD</b> <i>Conserve</i>
	Moderate	<b>POOR - MODERATE</b> <i>Enhance and Restore</i>	<b>MODERATE</b> <i>Enhance</i>	<b>MODERATE - GOOD</b> <i>Conserve and Enhance</i>
	Poor	<b>POOR</b> <i>Restore/Create</i>	<b>POOR - MODERATE</b> <i>Enhance and Restore</i>	<b>MODERATE</b> <i>Enhance</i>
		Weak	Moderate	Strong
Landscape strength				

The character of the area is **WEAK**. The amenity grassland and urban fringe recreation land does not have a strong sense of place, however, its association with the recently created grassland on the colliery mound means the area is more distinctive than some urban fringe green space. The woodland aids identification of the DPZ. The busy roads and urban fringes have a detracting influence on character.

The overall landscape strategy is **ENHANCE AND RESTORE**

**LANDSCAPE ACTIONS**

- Landscape features*
- Enhance and integrate the restored colliery spoil heap into adjacent open space through new linear planting
  - Conserve and enhance the woodland planting on the restored land and promote new planting to integrate the area into the surrounding landscape
  - Conserve and enhance the woodland surrounding the recreation ground and golf course to strengthen the enclosed wooded character of the green space
  - Enhance the disused railway track through management of the vegetation to ensure it fulfils its potential to be a distinctive feature through this DPZ
  - Conserve and enhance the long views from the higher ground, using the highest land as a managed vantage point
  - Conserve and enhance the condition of the hedgerows which surround the rough grassland fields through careful management and replacement planting where gaps are appearing
- Built form*
- Ensure any development is in keeping with the existing character of built form including heights and materials
  - Ensure new development does not protrude above the colliery tip to ensure it remains indistinct within the wider landscape

## MN014 Woodborough Sloping Farmland

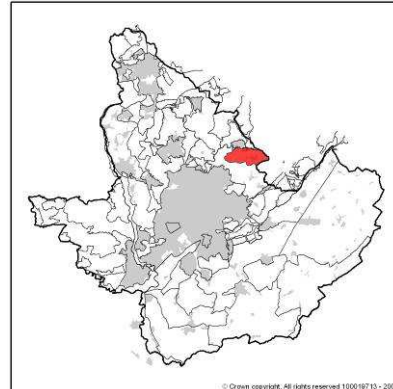


### CONTEXT

Regional Character Area: Mid-Nottinghamshire Farmlands

LDU reference: 343

DPZ Reference: MN014



### CHARACTERISTIC FEATURES

- An undulating landform, with a broad valley sloping down towards Calverton
- Underlying geology is a belt of Triassic rocks including Waterstones and Mercia Mudstones with small brooks flowing through the area draining the farmland
- This DPZ has a rural character although the large commuter settlement of Calverton is visible in the valley and has a localised urbanising influence
- The area has an open character compared to the adjacent rolling landform in the Dumbles DPZ
- Land use is predominantly arable farmland with pockets of pasture and recreational land
- The field pattern is large and regular on the valleys' slopes, with a long and narrow field pattern in the valleys
- Hedgerows are in variable condition; some are dense and well maintained whilst others are fragmented and severe management has led to a decline in quality
- There is evidence of re-planting and hedge laying which will improve field boundary condition
- Lines of isolated trees through fields provide evidence of past hedgerow removal
- The historic field pattern has mostly been lost although there is some evidence of irregular geometric fields patterns and patterns reflecting open fields around Woodborough
- There are only small woodland blocks, such as Fox Wood in the DPZ
- There are patches of young, deciduous woodland planting which will increase the woodland content of the area as it matures. These are mostly planted along field margins or corners of irregularly shaped fields
- Dense wooded green lanes are distinctive in the open landscape
- There are some tall and dense hedgerows along the urban edges which partially soften the settlement edges
- Isolated farms are scattered through the landscape and are often prominent on ridgelines and higher ground
- The settlement of Calverton is visible nestled in the valley as there is little vegetation to filter the urban edge and the surrounding high ground offers long views over the valley
- The linear historic core of Calverton is visible in the centre of the settlement, with the more uniform modern estates (former mining housing) extending outwards
- Characteristic building materials are red brick with pantile roofs
- There are long views to the north to the restored Calverton Colliery, Epperstone Park and the extensive woodland in Sherwood
- A highly visible caravan storage area forms a contrasting and detracting feature in the landscape, in the adjacent DPZ
- The roads are predominantly winding country roads with trees concentrated in these areas
- There is evidence of a Roman fort in the landscape near Fox Covert



**LANDSCAPE ANALYSIS**

**Condition**

This is a rural DPZ and the large field sizes and lack of woodland gives an open character. The landform is undulating and slopes down to a broad valley in the north of the character area. There are long views over the character area and to high ground in the adjoining DPZs. The settlements are nestled on lower ground. The agricultural land use is predominantly arable and the fields are generally large and irregular. Agricultural change has expanded field sizes and there is evidence of previous, smaller field pattern in the isolated lines of trees through the fields where hedgerow have been removed. In the valleys, along the settlement edges, there is evidence of longer, narrower field patterns.



Woodland is not a strong feature of this landscape. There are a small number of woodland blocks, but the DPZ is characterised by its open character. Small groups of trees around farms and lines of hedgerow trees are common features. Species are predominantly deciduous and include oak and ash. There are areas of new planting which will mature to increase the woodland content of the area. Hedgerows are generally well managed and there is evidence of new planting where gaps are appearing. Species include hawthorn, rose and field maple.



The landscape condition is **GOOD**. Hedgerows are generally well managed and there is evidence of planting to improve fragmenting hedgerows. New woodland planting is in good condition.

**Landscape Strength**

This DPZ has a wide zone of visual influence. There are long views into the character area from high ground in adjoining areas to the north such as Calverton Colliery and Epperstone Park. From within the DPZ there are long, unenclosed views over the undulating farmland and out to the surrounding landscape areas. Views in the valleys are channelled by landform; hedgerow trees are prominent features on the skyline.

Landscape Condition	Good	MODERATE - GOOD <i>Enhance</i>	<b>MODERATE - GOOD</b> <i>Conserve and Enhance</i>	GOOD <i>Conserve</i>
	Moderate	POOR - MODERATE <i>Enhance and Restore</i>	MODERATE <i>Enhance</i>	MODERATE - GOOD <i>Conserve and Enhance</i>
	Poor	POOR <i>Restore/Create</i>	POOR - MODERATE <i>Enhance and Restore</i>	MODERATE <i>Enhance</i>
		Weak	Moderate	Strong
Landscape strength				

The strength of character is **STRONG** to **MODERATE** in this DPZ. The undulating farmland has a coherent pattern but does not give a strongly distinctive sense of place. The features are evenly dispersed and the long views over the undulating landscape contribute to the character.

The overall landscape strategy is **CONSERVE** and **ENHANCE**

**LANDSCAPE ACTIONS**

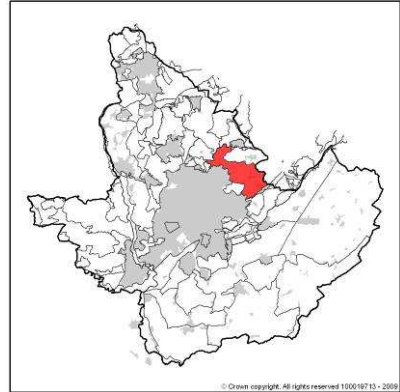
- Landscape features*
- Conserve and enhance the overall structure and distinctive rural character of the landscape
  - Conserve the well managed, rural character of the undulating farmland
  - Conserve the dense hedgerows and enhance the condition of fragmenting hedgerows through continued replanting or re-laying
  - Conserve the historic pattern of hedgerows along rural lanes
  - Conserve and enhance the new areas of woodland through careful management and ensure they integrate with the existing woodland
  - Conserve and enhance the hedgerow trees through replacement of senescent trees
  - Enhance the hedgerows and woodland belts along the settlement edges to soften the views to the urban edges, particularly along the southern edge of Calverton
- Built form*
- Enhance the integration of new and existing development in the countryside through careful design and placement of new development
  - Conserve the nestled character of the settlements and ensure any development expansion does not negatively impact the urban edge by ensuring new planting is in place to filter views
  - Ensure any new development reflects the materials and style of existing development, for example red brick and pantile roofs are characteristic in the area
  - Conserve the dispersed pattern of farmsteads through the agricultural landscape and ensure new development does not visibly increase the scale or density of built form in the rural landscape

## MN015 The Dumbles Rolling Farmland



### CONTEXT

Regional Character Area: Mid-Nottinghamshire Farmland  
LDU Reference: 312,316,317,343,308  
DPZ Reference: MN015



### CHARACTERISTIC FEATURES

- A series of rolling hills
- Underlying Triassic geology comprises Mercia Mudstone and Waterstones; streams flow in small, narrow, steep sided ravines created through the soft clay
- Farmland is predominantly arable with pockets of pasture
- Hedges are dense and well maintained, although there is some evidence of fragmentation in places and replacement with timber post and rail fences
- Field pattern is regular and geometric on the slopes, with a longer narrow field pattern in the valleys, often following watercourses
- Timber fences have replaced some hedges in grazing areas close to village fringes
- Hedgerow trees are frequent and give the landscape a wooded appearance
- Isolated trees in fields indicate removal of hedgerows through past field size expansion
- Meandering, tree lined river valleys, locally known as 'Dumble Valleys' are characteristic and distinctive features
- Large, mature oak and ash trees are common along the watercourses
- Newly planted and maturing plantation woodland is evident in the landscape particularly around Fox Covert where trees are a range of ages across whole fields
- Large blocks of plantation woodland in Sherwood are common in views on the ridgelines and plateaus of hills in adjoining DPZs
- Isolated, large, red brick farmhouses are dispersed through the landscape and are sometimes prominent on ridgelines
- Small traditional villages, now commuter settlements, are nestled low in the valleys and on the lower slopes
- The rising pantile roofline of the villages is visible from higher ground. Church spires are prominent but rarely protrude above the horizon
- Busy commuter roads and quiet country lanes cross the area
- Views of the settlement edges are often filtered by hedgerows and linear riparian belts of trees; the settlements appear well integrated into the landscape
- Views from the ridgelines are long and open over rolling farmland and nestled villages
- The valley floors have an enclosed character and views are restricted by landform and woodland or are channelled along the valleys
- Landscape features include Lambley House, visible on a hillside through woodland, and the church spires and towers of Epperstone, Lambley and Woodborough churches.
- Small remnant orchards are a feature of some village edges
- Villages are linear, often with narrow routes through the centre. Red brick properties are characteristic, in a range of styles
- Small water courses flowing through brick channels are distinctive features of the settlements
- Although the area is close to the urban fringes of Gedling, the ridgeline at Arnold screens the conurbation, creating a strong rural character despite close proximity to the urban centres



**LANDSCAPE ANALYSIS**

**Condition**

This DPZ has a rural character. The landscape is formed by a distinctive series of ridgelines and valleys creating a characteristic rolling landform. Dumble streams with associated linear woodlands are key features of great significance. Views are often for long distances over the farmland and include commuter villages nestled in the valleys and large farmhouses scattered through the landscape. Country lanes and busy commuter roads transect the landscape.

The land use is agricultural, including a mix of arable and pastoral land. Field sizes are medium and the field pattern is mostly regular and geometric. There are pockets of horse grazing, often in the valleys or close to village fringes. The historic field pattern remains intact in places and includes (as shown in Figure 11, HLC), a pattern reflecting open fields and semi-irregular fields, although there are also areas of modern, modified field patterns. This area has some of the oldest enclosure within Nottinghamshire.

The landscape appears well wooded due to the high numbers of hedgerow trees, dense linear woodland along the streams, scattered clumps of woodland on high ground and new plantation woodland. However, there are few large blocks of woodlands in this landscape. Species are commonly native deciduous trees, especially oak and ash. There is a mix of species in the newly planted woodland and in places lines of the same species have been planted. The most mature woodland is on the steepest slopes and river valleys.

The landscape condition is **GOOD**. Hedgerows are dense and well managed, although there is some evidence of fragmentation in places. Where hedgerows have been replaced, the timber fencing is in good condition. The agricultural land is well managed and features are intact with little sign of decline.



**Landscape Strength**

This DPZ is distinctive in the landscape and the rolling hills can be seen from the surrounding landscape areas. From within the DPZ there are long views to the north, to Epperstone and Calverton and to the wooded hills beyond. Rising landform and the artificial slopes of the reclaimed colliery mound restrict views south. Views from low ground in the DPZ are contained to the individual river valley.

The character of landscape area is **STRONG**. The fast flowing streams, distinctive landform and intact rural landscape create a strong sense of place. There are few detracting features in the landscape and the urban elements such as the villages are well integrated into the landscape. There is a well defined pattern of hedged fields, although there is some evidence of field expansion and past hedgerow loss. Overall the landscape features such as woodland, hedgerows, settlements and streams form an intact, strong and distinctive landscape character.

Landscape Condition	Good	<b>MODERATE</b> <i>Enhance</i>	<b>MODERATE GOOD</b> <i>Conserve and Enhance</i>	<b>GOOD</b> <i>Conserve</i>
	Moderate	<b>POOR - MODERATE</b> <i>Enhance and Restore</i>	<b>MODERATE</b> <i>Enhance</i>	<b>MODERATE - GOOD</b> <i>Conserve and Enhance</i>
	Poor	<b>POOR</b> <i>Restore/Create</i>	<b>POOR - MODERATE</b> <i>Enhance and Restore</i>	<b>MODERATE</b> <i>Enhance</i>
		Landscape strength		
		Weak	Moderate	Strong

The overall landscape strategy is **CONSERVE**

## LANDSCAPE ACTIONS

### *Landscape features*

- Conserve the high concentration of hedgerow trees through management and replacement of senescent trees
- Conserve the dense, diverse, mature linear belts of woodland along the streams and valleys
- Conserve the strong pattern of field boundary hedges by minimising the fragmentation through management and replacement planting rather than using timber fencing.
- Conserve the diversity and pattern of the woodland through management of young woodland and plantation woodland to maintain its structure.
- Conserve the rural farming character of the landscape, any changes should respect and integrate with the existing pattern of features
- Enhance the field boundary pattern through use of hedgerows where possible, and where timber fencing is required ensuring it is well maintained and hedgerows are planted adjacent
- Conserve the distinctive character of the fast flowing streams and steep-sided narrow valleys which contribute strongly to the sense of place
- Conserve the distinctive mature woodland on the steepest land

### *Built form*

- Protect the rural character by concentrating new development in existing villages
- Conserve the character of the settlements by restricting sprawled ribbon development along the roads approaching the villages
- Conserve the rural landscape from expansion of urbanising feature such as garden centres and large barns which are often constructed in the open countryside, where necessary ensure they reflect the style and character of farm buildings and ensure parking areas are low key and integrate into the landscape
- Conserve the character of the settlements through use of similar building materials and styles to existing development
- Conserve the narrow channelled streams through the centre of villages
- Conserve the narrow linear cores of the villages
- Ensure built development does not extend above the ridgelines to retain the sharp and distinctive separation between conurbations

### *Other development/ structures in the landscape*

- Conserve the rural character of the country lanes and ensure views to the roads are filtered by hedges

# S PZ 1 Oxtan Bogs River Meadowlands

## PHOTOGRAPH



## CHARACTERISTIC VISUAL FEATURES

- Gently undulating topography
- Narrow wooded valley of the Dover Beck
- Coniferous plantation woodland – Darcliff Hill
- Deciduous mixed species woodland – Thorndale Plantation
- Intensive arable farming
- Improved permanent pasture adjacent to isolated farms
- Urban fringe development
- Heath land character, apparent on road verges

## LANDSCAPE ANALYSIS

### Landscape Condition

The Landscape Condition is defined as **Moderate**

The area has a **coherent** pattern of elements mainly woodland and arable fields, there are **some** detracting features to the south of the area these include urban fringe development such as a caravan and camping site with permanent chalets, a lido with associated restaurant and car parking, and a sewage treatment works surrounded by palisade fencing. Overall this gives a **visually coherent** area. Thorndale Plantation is designated as a SINC - Ref 1/56, for its aquatic plant and invertebrate communities. In ecological terms the woodland and wetlands provide a **moderate** habitat for wildlife. Cultural integrity is **variable** in that the land use pattern has changed since Sanderson's plan of 1835 when the area was unenclosed heathland but some of this underlying healthy character is still apparent.

A **visually coherent** area with a **coherent** functional integrity gives a **moderate** landscape condition.

### Landscape Sensitivity

The Landscape Sensitivity is defined as **Moderate**

The components of the landscape are **characteristic** of the Sherwood LCA. The time depth is **historic** (post 1600) giving a **moderate** sense of place overall.

The landform is **apparent** with **enclosed** areas of woodland giving a **low** visibility of features within the PZ. There are views out from the edges of the woodland to the urban edge of Calverton.

A **moderate** sense of place and a **low** visibility leads to a **low** landscape sensitivity overall.

## ACTIONS – Restore and Create

### Landscape Features

- Seek opportunities for converting arable land to permanent pasture
- Conserve and enhance the ecological diversity of deciduous woodland, particularly wet woodland
- Retain and enhance river channel diversity and marginal aquatic vegetation
- Identify opportunities for conserving and restoring areas of heath land and Oak woodland.
- Avoid use of exotic tree species in any extension of golf course to the north

### Built Features

- Conserve the sparsely settled character of the river corridor by concentrating settlement within the existing village of Calverton
- Screen urban fringe uses to the south by incorporating native species planting to blend into adjacent areas in any new development.

## CONTEXT

NCC Landscape Type: River Meadowlands  
Policy Zone: S PZ 1  
Landscape Character Parcel: LCP 14

### Condition

Good	REINFORCE	CONSERVE & REINFORCE	CONSERVE
Moderate	CREATE & REINFORCE	CONSERVE & CREATE	CONSERVE & RESTORE
Poor	CREATE	RESTORE & CREATE	RESTORE

Low                      Moderate                      High

### Sensitivity

## SUMMARY OF ANALYSIS

### Condition

### Moderate

Pattern of Elements:	Coherent
Detracting Features:	Some
Visual Unity:	Coherent
Ecological Integrity:	Moderate
Cultural Integrity:	Variable
Functional Integrity:	Coherent

### Sensitivity

### Moderate

Distinctiveness:	Characteristic
Continuity:	Historic
Sense of Place:	Moderate
Landform:	Apparent
Extent of Tree Cover	Enclosed
Visibility:	Low



## **S PZ 1 Oxton Bogs River Meadowlands**

### **Policy: Restore and Create**

This Policy Zone consists of the narrow valley of the Dover Beck. The PZ varies in height from 95 metres at its northern end at Darcliff Hill to 45 metres at its southern end near Calverton Lido.

Land use in the area consists of a coniferous plantation woodland at Darcliff Hill. Thorndale Plantation is a deciduous woodland through which the Dover Beck flows and collects into a series of ponds within the woodland which vary seasonally in level. The remainder of the area is under intensive arable production or improved permanent pasture. At the extreme northern end Oakmere Park Golf Course encroaches into the area. At the southern end of the valley, close to the village of Calverton there is an area of urban fringe use on Bonner Lane; this includes a sewage works, a caravan and camping site with permanent chalets and a lido with associated restaurant and car parking.

Thorndale Plantation consists of Oak dominated woodland to its southern end, also Lime, Horse Chestnut and Birch. The central section contains Oak, Birch and Pine and also Cherry with Willow and Alder in the wetter areas. The northern valley area is a wetter with Alder and Willow Carr. Field boundary hedges are mostly Hawthorn and are grown out in places and open at the base.

There is limited permanent residential settlement in the area this includes isolated farms such as Salterford Farm and Beanford Farm. On the Sanderson Map of 1835 much of the area was unenclosed heath land to the east of the Dover Beck therefore much of the field pattern and woodland is of more recent origin.

Threats to the area include the extension of the golf course to the north, and the expansion of urban fringe uses of Calverton in the south. Other threats include the flooding of the river valley or lowering of the water table so that the wet woodland is lost.

# S PZ 2 Killarney Park Wooded Farmlands

## PHOTOGRAPH



## CHARACTERISTIC VISUAL FEATURES

- Medium to strongly undulating area with north/south ridgeline
- Medium sized geometric fields used for intensive arable production
- Small fields of permanent pasture used for grazing of sheep and horses
- Deciduous woodlands dominated by Oak
- Restored Bestwood Colliery
- Killarney Park residential estate
- Isolated farms
- Heath land character particularly apparent to road verges

## LANDSCAPE ANALYSIS

### Landscape Condition

The Landscape Condition is defined as **Moderate**

The area has a **coherent** pattern of elements mainly medium sized geometric arable fields, there are **some** detracting features these include telecommunications masts on high points, post and wire fences around farms used for horse grazing and stabling. Overall this gives a **visually coherent** area. There are a number of SINCs in the area these include 2/362 Raceground Hill and 5/31 Bestwood Sand Quarry designated for their plant communities 2/546 Pit Tip Top Plantation which has developed a notable grassland and wetland flora. Overall the area is a **moderate** habitat for wildlife with a network of interconnecting hedgerows. Cultural integrity is **good** in that the historic field pattern is still recognisable from the Sanderson Plan of 1835 in the present day pattern.

A **visually coherent** area with a **coherent** functional integrity gives a **moderate** landscape condition

### Landscape Sensitivity

The Landscape Sensitivity is defined as **Moderate**

The components of the landscape are **characteristic** of the Sherwood LCA. The time depth is **historic** (post 1600) giving a **moderate** sense of place overall.

The undulating landform is **apparent** with small **intermittent** areas of woodland giving a **moderate** visibility of features within the PZ.

A **moderate** sense of place and a **moderate** visibility leads to a moderate landscape sensitivity overall.

## ACTIONS – Conserve and Create

### Landscape Features

- **Create** opportunities for restoring areas of heath land where appropriate
- **Create** small deciduous woodlands where appropriate
- **Conserve** existing deciduous woodlands

### Built Features

- **Conserve** the sparsely settled character of the landscape by concentrating new developments around the existing urban fringe of Nottingham
- Promote large-scale woodland planting to contain and soften urban fringe development
- **Conserve** the existing field pattern by locating new small scale development within the existing field boundaries
- Promote sensitive design and siting of new agricultural buildings
- Promote measures for reinforcing the traditional character of farm buildings using vernacular building styles.

## CONTEXT

NCC Landscape Type: Wooded farmlands  
Policy Zone: S PZ 2  
Landscape Character Parcel: 72

## Condition

Good	REINFORCE	CONSERVE & REINFORCE	CONSERVE
Moderate	CREATE & REINFORCE	CONSERVE & CREATE	CONSERVE & RESTORE
Poor	CREATE	RESORE & CREATE	RESTORE
	Low	Moderate	High
	<b>Sensitivity</b>		

## SUMMARY OF ANALYSIS

### Condition

### Moderate

Pattern of Elements:	Coherent
Detracting Features:	Some
Visual Unity:	Coherent
Ecological Integrity:	Moderate
Cultural Integrity:	Variable Good?
Functional Integrity:	Coherent

### Sensitivity

### Moderate

Distinctiveness:	Characteristic
Continuity:	Historic
Sense of Place:	Moderate
Landform:	Apparent
Extent of Tree Cover	Intermittent
Visibility:	Moderate

## **S PZ 2 Killarney Park Wooded Farmlands**

### **Policy: Conserve and Create**

This Policy Zone consists of a strongly to gently undulating area immediately to the north of the urban fringe of Nottingham and the Top Valley and Rise Park estates (excluding the Big Wood area of Bestwood Country park.) The area rises to form a north south ridge line with Raceground Hill at one end (118 metres) and Crimea Plantation at 128 metres at the other. The restored Bestwood colliery reaches a high point of 124 metres to the south of the PZ.

Land use in the area consists of intensive arable agriculture over the majority of the zone with some smaller fields of permanent pasture north of the Killarney park estate and south west of Twelve Acre Farm. The former Bestwood Colliery has also been restored to agricultural use to the south. There is a disused sand quarry to the north of Big Wood.

There are a number of small deciduous woodlands at Raceground Hill, Crimea Plantation and on the summit of the restored Bestwood Colliery. Hedgerows vary in quality throughout the area, some are strong and well trimmed, and others are gappy and poorly maintained. Hedgerows have been removed in horse grazing areas and replaced with post and wire fences.

Residential settlement consists of the Killarney Park housing development of prefabricated bungalows and many isolated farms. The historic pattern on Sanderson's map of 1835 is still recognisable in the present day field pattern although some intervening field boundaries have been removed due to intensification of agriculture.

Threats to the area include expansion of the Nottingham urban fringe from the south and intensification of agriculture leading to more loss of field boundaries. More horse grazing and stabling may lead to further removal of field boundaries and provision of temporary structures such as stables.

# S PZ 3 Papplewick Wooded Estatelands

## PHOTOGRAPH



## CONTEXT

NCC Landscape Type: Sherwood  
 Policy Zone: S PZ 3  
 Landscape Character Parcel: S6, S7,S8, S9, S12

### Condition

Good	REINFORCE	CONSERVE & REINFORCE	CONSERVE
Moderate	CREATE & REINFORCE	CONSERVE & CREATE	CONSERVE & RESTORE
Poor	CREATE	RESORE & CREATE	RESTORE

Low                      Moderate                      High

### Sensitivity

## CHARACTERISTIC VISUAL FEATURES

- Gently undulating topography
- Large to medium geometric arable fields used for cereal and oil seed rape production
- Many scattered small deciduous woodlands
- Many small coniferous plantations and shelter belts
- Pig, sheep and horse grazing
- Distinct heath land character, apparent on road verges
- Isolated farms and ribbon residential development along roads south of Ravenshead
- Busy roads – A60 and A614

## LANDSCAPE ANALYSIS

### Landscape Condition

The Landscape Condition is defined as **Good**

The area has a **coherent** pattern of elements mainly medium sized geometric arable fields, there are **few** detracting features these include pylons crossing the area, masts on high points, and busy roads. Overall this gives a **visually unified** area. There are a number of SINC's in the area designated for their acidic flora, as well as a number of heath land register sites. Overall the area is a **moderate** habitat for wildlife with a network of interconnecting small and hedgerows with mature hedgerow trees. Cultural integrity is **variable** in that the land use pattern is still recognisable from Sanderson's Plan of 1835 although some internal boundaries have been removed due to agricultural intensification.

A **visually unified** area with a **coherent** functional integrity gives a **good** landscape condition

### Landscape Sensitivity

The Landscape Sensitivity is defined as **Moderate**

The components of the landscape are **characteristic** of the Sherwood LCA. The time depth is **historic** (post 1600) giving a **moderate** sense of place overall. There are fragments of historic woodlands through out the area and older historic settlements such as Papplewick.

The undulating landform is **apparent** with small **intermittent** areas of woodland giving a **moderate** visibility of features within the PZ. Views are typically restricted out of the area by woodland cover, landform and built urban edges

A **moderate** sense of place and a **moderate** visibility leads to a **moderate** landscape sensitivity overall.

## SUMMARY OF ANALYSIS

### Condition

**Good**

Pattern of Elements:	Coherent
Detracting Features:	Few
Visual Unity:	Unified
Ecological Integrity:	Moderate
Cultural Integrity:	Variable
Functional Integrity:	Coherent

### Sensitivity

**Moderate**

Distinctiveness:	Characteristic
Continuity:	Historic
Sense of Place:	Moderate
Landform:	Apparent
Extent of Tree Cover	Intermittent
Visibility:	Moderate

## ACTIONS – Conserve and Reinforce

### Landscape Features

- **Conserve** the ecological diversity of small woodlands and mature hedgerows throughout the area
- **Conserve** roadside hedgerows with mature trees
- **Reinforce** hedgerows where these have become degraded
- Create opportunities for restoring areas of heath land where appropriate
- Create opportunities for creating small deciduous woodlands where appropriate

**Built Features**

- **Conserve** the integrity and rural character of the landscape by concentrating new developments around the existing urban fringe of Ravenshead to the north and along transport corridors.
- **Conserve** the character and architectural style of Papplewick village
- **Conserve** the existing field pattern by locating new small scale development within the existing field boundaries
- Promote large-scale woodland planting to contain and soften urban fringe development
- Promote sensitive design and siting of new agricultural buildings
- Promote measures for reinforcing the traditional character of farm buildings using vernacular building styles.
- Create small scale woodland/tree planting to soften new development, preferably in advance of development.

## **S PZ 3 Papplewick Wooded Estatelands**

### **Policy: Conserve and Reinforce**

This Policy Zone consists of a gently undulating area which stretches from the junction of the A60 and A614 at Leapool Island at a height of 100 metres in the south gradually rising to 161 metres north of the village of Ravenshead.

Landuse in the area is predominantly intensive arable farming with cereal and oil seed rape being grown in large to medium sized geometric fields. There are smaller areas used for raising pigs, also sheep grazing in the south of area. Grazing of horses is prevalent in the north of the area with many fields being subdivided to form smaller paddocks. Bestwood sand and gravel quarry is located alongside the A60 in the centre of the area.

Other land uses include country pubs and restaurants, and plant nurseries alongside the A60 and A614, these are main routes which connect the City of Nottingham with the north of the county. Many farm buildings have been diversified into Bed and Breakfast accommodation, stables or kennels.

The only significant area of woodland is that which surrounds Burntstump Country park in the south, typical species include Beech, Birch, Oak, Sycamore, Sweet Chestnut and Scot's Pine, The Nottinghamshire Police HQ and The Park Hospital are located in this area of woodland, there is a central section of more open parkland character. There are numerous small woodlands, both coniferous plantations and linear shelter belts; and deciduous woodlands - with Oak, and Birch as the dominant species, throughout the area. Many of the woodlands were in already existence in 1835 at the time of Sanderson's Plan. Hedgerows particularly to road edges are strong throughout the area, mostly hawthorn with mature trees, mainly Oak. These hedgerows form a network connecting with the small woodlands. The area has a distinctly heath land character with bracken in road verges throughout the PZ.

There is limited residential settlement in the area: this consists of isolated farms and small sections of ribbon development along the A60 and along Longdale Lane, south of Ravenshead. Papplewick village is a conservation area and forms a distinctly different area within the PZ with many stone cottages, it also contains Papplewick pumping station - a Grade II listed building.

Threats to the area include expansion of the residential areas of Ravenshead, the possible expansion of sand and gravel quarrying within the area, and intensification of rural fringe activities leading to further diversification of farming activity, as well as the intensification of agricultural land uses.

# S PZ 5 Newstead Wooded Estatelands

## PHOTOGRAPH



## CONTEXT

NCC Landscape Type: Sherwood  
 Policy Zone: S PZ 5  
 Landscape Character Parcel: S13

### Condition

Good	REINFORCE	CONSERVE & REINFORCE	CONSERVE
Moderate	CREATE & REINFORCE	CONSERVE & CREATE	CONSERVE & RESTORE
Poor	CREATE	RESORE & CREATE	RESTORE

Low                      Moderate                      High

### Sensitivity

## CHARACTERISTIC VISUAL FEATURES

- Gently undulating topography
- Improved permanent pasture
- Medium, geometric arable fields
- Mature hedgerows with trees
- Deciduous woodland with a Rhododendron under storey in places
- Large detached residential properties set in woodland, with stone boundary walls to road frontage
- Heath land character, particularly apparent on road verges
- Isolated farms
- Busy roads – A60, A 6020

## LANDSCAPE ANALYSIS

### Landscape Condition

The Landscape Condition is defined as **Moderate**

.The PZ has a **coherent** pattern of elements as much of the area is woodland , arable farmland, or improved pasture. There are **some** detracting features these include the busy A60 and B6020. Overall this is a **visually coherent** area. The woodland is an extension of the Newstead Abbey woodland but is not part of the Newstead Park SINC Ref 1/34 but due to its interconnection with the adjacent woodland and heath land habitats the area provides a **moderate** habitat for wildlife with more disturbance due to the housing within it. The cultural integrity is **variable** in that the historic field pattern of the farmed area to the north shown in Sanderson's Plan of 1835 remains but the extension of housing into the woodland area has resulted in some mature trees being removed.

A **visually coherent** area with a **coherent** functional integrity gives a **moderate** landscape condition

### Landscape Sensitivity

The Landscape Sensitivity is defined as **Low**

The components of the landscape are **characteristic** of the Sherwood LCA. The time depth is **historic** (post 1600) overall giving a **moderate** sense of place overall. There are remnants of older pre Sanderson woodland within this area.

The undulating landform is **apparent**. The woodland area is enclosed giving a **low** visibility into and out of this part of the area but the northern farmed area is more open with views out to the north to the wooded ridgelines of the Sherwood area.

A **moderate** sense of place with a **low** visibility gives a **low** landscape sensitivity overall

## SUMMARY OF ANALYSIS

### Condition

### Moderate

Pattern of Elements:	Coherent
Detracting Features:	Some
Visual Unity:	Coherent
Ecological Integrity:	Moderate
Cultural Integrity:	Variable
Functional Integrity:	Coherent

### Sensitivity

### Low

Distinctiveness:	Characteristic
Continuity:	Historic
Sense of Place:	Moderate
Landform:	Apparent
Extent of Tree Cover	Enclosed
Visibility:	Low

## ACTIONS – Create and Reinforce

### Landscape Features

- Conserve the ecological diversity of the deciduous woodland and individual mature trees.
- Conserve areas of heath land and acidic grassland within the woodland areas.
- **Reinforce** native species under storey by removing Rhododendron to the interior of the woodland
- **Create** new areas of heath land and acid grassland where appropriate.
- **Create** new small deciduous woodland where appropriate

### Built Features

- Locate any new small scale development in the more wooded area where it is well screened, retain existing stone walls
- **Create** small scale woodland/tree planting to soften new development, preferably in advance of development

## **S PZ 5 Newstead Wooded Estate lands**

### **Policy: Create and Reinforce**

This Policy Zone falls into two distinct areas, firstly an area of arable farming and permanent improved pasture between the boundary of Newstead Abbey and the B6020: and secondly an area of woodland stretching north to south along the A60 in which a number of large detached houses are located.

The farmed area consists of large geometric fields used for the production of cereals, the hedgerows are generally strong, mostly Hawthorn, with mature trees. The field pattern reflects the historic pattern shown in the Sanderson map of 1835. There is a small area of heath land to the north of the PZ. Settlement consists of isolated farms and an extension of the housing estate within Hagg Nook Wood. This estate, off High Leys Close, is in a more open landscape than the earlier phase but is screened from the A6020 by a belt of coniferous trees.

The woodland area is an extension of the Newstead Abbey woodland, species include mature Beech, Birch, Oak, Sycamore and Scot's pine with a Rhododendron under storey in places, elsewhere there is a ground flora of acidic grassland and heath land species. Large detached properties are located within this area well screened from the busy A60 by this woodland.



# S PZ 16 Annesley Wooded Estatelands

## PHOTOGRAPH



## CHARACTERISTIC VISUAL FEATURES

- Gently undulating topography
- Coniferous plantation woodlands
- Deciduous woodland fringes to plantations with mature trees – Oak
- Limited hedgerows varying in quality from good to poor
- Intensive arable farming with large fields
- Settlements of Annesley Pit village and Newstead
- Restored Annesley Pit and colliery infrastructure.
- Isolated farmhouses
- Busy major roads
- Heath land character, particularly apparent along woodland rides

## LANDSCAPE ANALYSIS

### Landscape Condition

The Landscape Condition is defined as **Good**

The area has a **coherent** pattern of elements with large swathes of plantation woodland fringed by areas of intensive arable production, there are **few** detracting features these include visual disturbance and noise of busy roads including the M1. Overall this gives a **visually unified** area. There are a number of SINC's in the area mainly designated for their grassland habitats. Overall the area is a **moderate** habitat for wildlife because although the coniferous woodland is a less diverse habitat than deciduous woodland it still provides shelter. Cultural integrity is **variable** in that the land use pattern of the Sanderson Plan of 1835 has been obliterated in the forested areas, in the farmed areas many internal boundaries have been removed due to agricultural intensification. However fragments of historic landscapes remain within the villages of Annesley and Newstead

A **visually unified** area with a **coherent** functional integrity gives a **Good** landscape condition.

### Landscape Sensitivity

The Landscape Sensitivity is defined as **Low**

The components of the landscape are **characteristic** of the Sherwood LCA. The time depth is **historic** (post 1600) giving a **moderate** sense of place overall. An ancient monument, a Motte and Bailey, remains protected between the dual lanes of the A611.

The undulating landform is **apparent** and the **enclosed** nature of the woodland gives a **low** visibility of features within the PZ. However panoramic views are available from the high points of Liever's Hill and Misk Hill.

A **moderate** sense of place and a **low** visibility leads to a **low** landscape sensitivity.

## ACTIONS – Reinforce

### Landscape Features

- Conserve deciduous woodland to road edges with mature trees
- Conserve aquatic habitats within deciduous woodland areas
- **Reinforce** the field pattern of hedgerows in the southern area where these have become degraded or lost
- Create opportunities for restoring areas of heath land within coniferous plantations where appropriate

### Built Features

- Conserve the character and architectural style of Annesley and Newstead villages
- Promote sensitive design and siting of new agricultural buildings
- Promote measures for reinforcing the traditional character of farm buildings using vernacular building styles.
- Conserve the existing field pattern where it exists by locating new small scale development within the existing field boundaries
- Create small scale woodland/tree planting to soften new development, preferably in advance of development

## CONTEXT

NCC Landscape Type: Sherwood  
Policy Zone: S PZ 16  
Landscape Character Parcel: S71, S81

## Condition

Good	REINFORCE	CONSERVE & REINFORCE	CONSERVE
	CREATE & REINFORCE	CONSERVE & CREATE	CONSERVE & RESTORE
Moderate	CREATE	RESORE & CREATE	RESTORE
Poor			
	Low	Moderate	High
	<b>Sensitivity</b>		

## SUMMARY OF ANALYSIS

### Condition Good

Pattern of Elements:	Coherent
Detracting Features:	Few
Visual Unity:	Unified
Ecological Integrity:	Moderate
Cultural Integrity:	Variable
Functional Integrity:	Coherent

### Sensitivity Low

Distinctiveness:	Characteristic
Continuity:	Historic
Sense of Place:	Moderate
Landform:	Apparent
Extent of Tree Cover	Enclosed
Visibility:	Low

## **S PZ 16 Annesley Wooded Estatelands**

### **Policy: Reinforce**

This Policy Zone extends from Annesley in the north to the edge of Hucknall in the south. It consists of a north/ south sandstone ridge which reaches a height of between 175 and 180 metres at its highest point.

The land use of the area is approximately 75 % commercial forestry plantation, composed of the Annesley Plantation and Park Forest plantations on the central ridge of high ground. Other land uses include permanent improved pasture used for cattle grazing, for example near Annesley Pit village in the north, around Mosley Farm. There is intensive production of cereal crops, brassicas, and oil seed rape to the perimeter of the wooded plantations. There are smaller areas of deciduous woodland scattered within the coniferous woodlands and there are fringes of deciduous woodland to the plantations where they border the busy major roads that pass through the area, these areas include mature Oak trees. A segment of the M1 passes through the west of the area.

To the north the reclaimed Annesley colliery spoil tip borders on the area and there are remains of the infrastructure of the colliery.

The only significant area with hedgerows is to the south of the PZ, to the north west of Hucknall, which vary in quality from gappy to good. The historic field pattern has largely been obliterated by the forestry plantations there are fragments of the pattern remaining in the south of the area but there has been much removal of field boundaries within these areas. The area retains its heath land character with bracken to road edges and sections of heath land vegetation along woodland rides.

The only significant residential settlements in the area are the villages of Annesley and Newstead. There are also isolated farms within the area such as at Misk Hill. Other built development includes a small industrial estate at Newstead.

There are views out from the high points of Lievers Hill and Misk Hill, else where views are restricted by woodland.

Threats to the area include the expansion of Sherwood Business Park which lies immediately to the north west of the Policy Zone and changes to the management of the forested areas which would change the character of this Zone.

# S PZ 17 Calverton North Village Farmlands

## PHOTOGRAPH



## CHARACTERISTIC VISUAL FEATURES

- Gently undulating topography
- Restored colliery spoil heap and remaining infrastructure of former Calverton colliery
- Medium to small sized arable fields
- Built edge of Calverton residential area
- Small industrial estate
- Recreational activities – Golf Course and Sports Fields
- Poor internal field boundaries , stronger road hedge boundaries with mature trees
- Limited woodland
- Heath land character, particularly apparent along road verges and former mineral railway line
- Isolated farms

## LANDSCAPE ANALYSIS

### Landscape Condition

The Landscape Condition is defined as **Very Poor**

The area has an **incoherent** pattern of elements with a variety of land uses including intensive arable production, recreational land uses and small scale industrial areas as well as the restored Calverton Colliery. There are **many** detracting features these include busy roads which pass through the area. The landform of the former colliery spoil heap is a dominating feature. Overall this gives a **visually significantly interrupted** area. There are 2 SINC's in the area 2/523 Lodge Farm grasslands and 5/1296 Calverton Pit Mineral Railway both designated for their scrub and acid grassland communities. Overall the area is a **moderate** habitat for wildlife because there is connectivity between the former mineral railway line and existing hedgerows which are generally strong to road edges with mature trees. Cultural integrity is **variable** in that the land use pattern of the Sanderson's Plan of 1835 has largely been removed by the construction of the colliery and elsewhere many internal boundaries have been removed due to agricultural intensification, but some vernacular farm buildings remain. Patching's Farm is typical of the red brick and pantile roofed style.

A **visually significantly interrupted** area with a **coherent** functional integrity gives a **very poor** landscape condition

### Landscape Sensitivity

The Landscape Sensitivity is defined as **Very Low**

The components of the landscape are not especially characteristic of the Sherwood LCA and the area is **indistinct**. The time depth of many of the features is recent in that many features have been created in the last 50 years giving a **very weak** sense of place overall.

The undulating landform is apparent and intermittent areas of the woodland and hedgerows give a **moderate** visibility of features within the PZ. Views out of the area to the north tend to be blocked by the colliery spoil heap and to the south by the built edge of Calverton. A **moderate** sense of place and a **low** visibility leads to a **very low** landscape sensitivity.

## CONTEXT

NCC Landscape Type: Sherwood  
Policy Zone: S PZ 17  
Landscape Character Parcel:

### Condition

Good	REINFORCE	CONSERVE & REINFORCE	CONSERVE
Moderate	CREATE & REINFORCE	CONSERVE & CREATE	CONSERVE & RESTORE
Poor	CREATE	RESORE & CREATE	RESTORE

Low                      Moderate                      High

### Sensitivity

## SUMMARY OF ANALYSIS

### Condition

**Very Poor**

Pattern of Elements:	Incoherent
Detracting Features:	Many
Visual Unity:	Significantly interrupted
Ecological Integrity:	Moderate
Cultural Integrity:	Variable
Functional Integrity:	Coherent

### Sensitivity

**Very Low**

Distinctiveness:	Indistinct
Continuity:	Recent
Sense of Place:	Very Weak
Landform:	Apparent
Extent of Tree Cover	Intermittent
Visibility:	Moderate

## ACTIONS – Create

### Landscape Features

- **Recreate** and reinforce the field pattern of hedgerows to the north of Calverton where these have been lost
- **Create** opportunities for restoring areas of heath land particularly within the Colliery, along the disused mineral line, and within the Golf course where appropriate.
- **Create** small deciduous woodlands where appropriate
- Seek opportunities to restore arable land to permanent pasture

### Built Features

- Conserve the sparsely settled character of this area by concentrating any new development within the core of Calverton village.
- Promote Sensitive design and siting of new agricultural buildings
- Promote measures for reinforcing the traditional character of farm buildings using vernacular building styles.
- **Create** small scale woodland to contain and soften built development, preferably in advance of development
- Contain new small scale development within historic field boundaries

## **S PZ 17 Calverton North Village Farmlands**

### **Policy: Create**

This Policy Zone gently slopes south eastwards towards the village of Calverton and the valley of the Dover Beck. It ranges in height from 50 metres at the edge of the valley to around 100 metres at the top of the restored Calverton Colliery spoil tip which dominated this area.

The major land uses include intensive arable production of cereals and oil seed rape in fields which range in size from medium geometric to the north west of Calverton to smaller strip fields to the north east of the village. There are small areas of permanent pasture with some sheep grazing and poultry production with poultry rearing sheds. There is also horse grazing where fields have been divided with temporary materials to create smaller paddocks. Other land uses are related to leisure uses such as Ramsdale Golf Course to the west of the area and sports fields. Part of the northern area is dominated by the restored Calverton Colliery spoil tip and its remaining infrastructure. Busy roads pass through the area as well as a disused mineral railway line.

There is little tree cover within the area. This includes a small section of forestry plantation to the north and screening planting around the household recycling centre and to the margins of the restored colliery and along the disused railway line.

Hedgerows are fragmented and gappy to internal field boundaries, road hedgerows are generally in better condition with mature trees in places including Ash, Birch and Sycamore.

The area retains its heath land character with bracken to road edges and small fragments of heath land vegetation within the colliery site and particularly along the former mineral railway line which consists of Birch scrub with Gorse and Bracken.

Built development includes isolated farms which are mostly red brick with newer agricultural buildings. Patchings Farm, which has been converted into an arts centre with shops and a café, is typical of the red brick and pantile roofed vernacular style. There is a small industrial estate with container storage, a timber yard and a household waste recycling centre.

Threats include expansion of the industrial area and encroachment of urban businesses along main transport route as well as expansion of the residential area of Calverton. The field pattern may be degraded by further loss of internal hedgerow boundaries.

# S PZ 18 Blidworth and Rainworth Wooded Estatelands

## PHOTOGRAPH



## CHARACTERISTIC VISUAL FEATURES

- Gently undulating topography
- Coniferous forestry plantations with deciduous margins to road edges
- Small deciduous woodlands dominated by Oak.
- Intensive arable farming in large to medium geometric fields
- Poor internal field boundaries, stronger road edge boundaries with mature trees
- Rainworth Bypass crosses the north of the area, A614 runs north to south
- Isolated farms
- Heath land character, apparent to road verges, heath land species present within woodlands and along disused mineral railway lines.
- Evidence of former coal mining, restored spoil heaps at Blidworth and Calverton
- Settlements of Blidworth and Rainworth

## LANDSCAPE ANALYSIS

### Landscape Condition

The Landscape Condition is defined as **Moderate**

The area has a **coherent** pattern of elements mainly large geometric arable fields and blocks of coniferous plantation woodland, there are **some** detracting features these include busy roads including the A614 and Rainworth Bypass route and the built edge of urban areas of Rainworth and Blidworth. Overall this gives a **visually coherent** area. There are a number of SINC's and heath land sites in the area. Overall this is a **moderate** habitat for wildlife although connectivity is reduced by poor hedgerows in places and busy roads. Cultural integrity is **variable** in that the land use pattern is of the Sanderson's plan of 1835 has been lost due to forestry planting and coal mining activities and where it exists many hedgerows have been removed. Fragments of deciduous woodlands that were present in the plan remain and well as isolated vernacular farm buildings.

A **visually coherent** area with a **coherent** functional integrity gives a **moderate** landscape condition

### Landscape Sensitivity

The Landscape Sensitivity is defined as **Moderate**

The components of the landscape are **characteristic** of the Sherwood LCA. The time depth is **historic** (post 1600) giving a **moderate** sense of place overall. There is evidence of the pre enclosure heath land character in the presence of heath land species to road edges and within woodlands.

The undulating landform is **apparent** with **intermittent** areas of woodland giving a **moderate** visibility of features in and out of the PZ to the north, although the higher proportion of woodland in the south creates a more enclosed area. There are dominant views of the urban edges of Blidworth and Rainworth.

A **moderate** sense of place and a **moderate** visibility leads to a **moderate** landscape sensitivity overall.

## CONTEXT

NCC Landscape Type: Sherwood  
Policy Zone: S PZ 18  
Landscape Character Parcel: S1, S2, S11

### Condition

Good	REINFORCE	CONSERVE & REINFORCE	CONSERVE
Moderate	CREATE & REINFORCE	CONSERVE & CREATE	CONSERVE & RESTORE
Poor	CREATE	RESORE & CREATE	RESTORE

Low                      Moderate                      High

### Sensitivity

## SUMMARY OF ANALYSIS

### Condition

**Moderate**

Pattern of Elements: Coherent

Detracting Features: Some

Visual Unity: Coherent

Ecological Integrity: Moderate

Cultural Integrity: Variable

Functional Integrity: Coherent

### Sensitivity

**Moderate**

Distinctiveness: Characteristic

Continuity: Historic

Sense of Place: Moderate

Landform: Apparent

Extent of Tree Cover: Intermittent

Visibility: Moderate

## ACTIONS – Conserve and Create

### Landscape Features

- **Conserve** the ecological diversity of small deciduous woodlands throughout the area
- **Conserve** and Reinforce field boundary and road hedgerows where these have become degraded or lost
- **Create** opportunities for restoring areas of heath land where appropriate
- **Create** small deciduous woodlands where appropriate

### Built Features

- **Conserve** the integrity and rural character of the landscape by concentrating new developments around the existing urban fringe of Blidworth and Rainworth
- **Create** small scale woodland/tree planting to soften new development, preferably in advance of development
- **Conserve** the existing field pattern by locating new small scale development within the existing field boundaries
- Promote measures for reinforcing the traditional character of farm buildings using vernacular building styles.
- Promote sensitive design and siting of agricultural buildings

## **S PZ 18 Blidworth and Rainworth Wooded Estatelands**

### **Policy: Conserve and Create**

This Policy Zone consists of an area which stretches from the former Calverton Colliery in the south to the villages of Rainworth and Blidworth in the north. The area is gently undulating with a height range of consistently between 90 and 135 metres.

The major land uses consist of commercial forestry plantations particularly to the south of the area. The forestry areas are publicly accessible with well maintained picnic areas and broad deciduous edges to the woodlands. To the centre and north intensive arable farming predominates with regular medium to large fields of cereals. There is some permanent pasture used for sheep grazing and horse grazing nearer to the settlements of Blidworth and Rainworth. There is intensive rearing of chickens in poultry sheds. Facilities for leisure activities include a golf course to the south and sports fields near the villages. There is also evidence of the former coal mining industry with restored colliery spoil heaps at Calverton and Blidworth, disused mineral lines also cross the area. Busy roads pass through the area such as the A614, and the Rainworth Bypass, away from these straight major routes are more winding routes often with 'sunken lanes' particularly around Blidworth.

The conifer woodlands are mainly Scot's Pine and Corsican Pine with edges of Ash, Beech, Birch, Holly and Oak. Coniferous game coverts are also dotted throughout the area. There are many isolated deciduous woodlands dominated by Oak and Sycamore some of which are ancient woodlands. Field boundary hedgerows are mostly trimmed but often gappy with limited hedgerow trees. Where present, these are Birch, Oak and Sycamore. Road hedgerows are stronger with large mature trees in places particularly along the minor roads.

The area has a heath land character, with patches of heath land within woodlands and along road verges. The plantations create the characteristic coniferous wooded skylines of the Sherwood region.

The historic field pattern has been lost in the areas of mineral extraction and forestry planting and there has been much hedgerow removal or replacement with post and wire fences in the intensively farmed arable areas.

Built features include isolated farms with core buildings of red brick with slate roofs, and also stone buildings. Many farms have modern storage buildings around the perimeter e.g. Haywood Oaks Farm There is a small industrial estate north of Blidworth with modern buildings.

Threats to the area include clear felling of forestry areas causing a change on the character of these areas, further intensification of agriculture, expansion of industrial, and residential areas of Blidworth, as well as industrial and residential expansion of Rainworth particularly along the bypass.



# S PZ 41 Bestwood Wooded Farmlands

## PHOTOGRAPH



## CONTEXT

NCC Landscape Type: Sherwood  
 Policy Zone: S PZ 41  
 Landscape Character Parcel: S 72

### Condition

Good	REINFORCE	CONSERVE & REINFORCE	CONSERVE
	CREATE & REINFORCE	CONSERVE & CREATE	CONSERVE & RESTORE
Moderate	CREATE	RESORE & CREATE	RESTORE
Poor			
	Low	Moderate	High
	<b>Sensitivity</b>		

## CHARACTERISTIC VISUAL FEATURES

- Gently undulating topography
- Mature deciduous woodland with open areas of acidic grassland
- Shrubby under storey to woodland including Rhododendron
- Seasonal ponds and wetlands
- Permanent pasture with sheep and horse grazing to the perimeter
- Mature hedgerows to pasture areas
- Victorian red brick lodge buildings within the parkland
- Mature trees to the southern access road
- Isolated farms to perimeter of woodland

## LANDSCAPE ANALYSIS

### Landscape Condition

The Landscape Condition is defined as **Moderate**

The PZ has a **unified** pattern of elements as the majority of the area is woodland. However there are **many** detracting features such as the large public buildings located within the park area with associated car parking. There is a large housing estate to the south of the woodland which creates high levels of formal and informal recreational use with attendant disturbance. Despite this overall this is a **visually coherent** area. The woodland is designated as a SINC 2/357 Bestwood Country Park 'an extensive area of mature woodland with floral and faunal interest'. The mature woodland, permanent pasture, and interconnecting hedgerows provide a **moderate** habitat for wildlife. Cultural integrity is **variable** in that the park is a remnant of a more ancient hunting forest and there are a number of listed buildings in the woodland but the intensity of recreational use results in degraded appearance to some areas.

A **visually coherent** area with a **moderate** functional integrity gives a **moderate** landscape condition.

### Landscape Sensitivity

The Landscape Sensitivity is defined as **Low**

The components of the landscape are **characteristic** of the Sherwood LCA. The time depth is **historic** (post 1600) giving a **moderate** sense of place overall. There are more ancient remnants of woodland within the woodland as a whole.

The undulating landform is **apparent** and **enclosed** by the large area of woodland giving a **low** visibility in and out of the area

A **moderate** sense of place with a low visibility gives a **low** landscape sensitivity overall.

## SUMMARY OF ANALYSIS

### Condition

**Moderate**

Pattern of Elements:	Unified
Detracting Features:	Many
Visual Unity:	Coherent
Ecological Integrity:	Moderate
Cultural Integrity:	Variable
Functional Integrity:	Moderate

### Sensitivity

**Low**

Distinctiveness:	Characteristic
Continuity:	Historic
Sense of Place:	Moderate
Landform:	Apparent
Extent of Tree Cover	Enclosed
Visibility:	Low

## ACTIONS – Create and Reinforce

### Landscape Features

- Conserve permanent pasture to the perimeter of the area.
- **Reinforce** hedgerows to pasture areas.
- Conserve the ecological diversity of the woodland and individual mature trees.
- **Create** additional areas of heath land and acidic grassland within the woodland.
- Conserve seasonal ponds within the woodland
- **Reinforce** native species under storey by removing Rhododendron to the interior of the woodland.

### Built Features

- Conserve the character and architectural style of the lodge buildings and ensure this is respected in any new development.
- Contain any new development on the perimeter of the woodland within the existing field boundaries.

## **S PZ 41 Bestwood Wooded Farmlands**

### **Policy: Create and Reinforce**

This Policy Zone consists of a gently undulating area ranging in height from 79 metres on the northern edge to 120 -125 metres on its eastern and southern edges. The area generally slopes down in a north westerly direction to the valley of the River Leen.

The majority of the area is covered by mature deciduous woodland known as Big Wood. Parts of this wood are remnants of the Bestwood Lodge Hunting Forest which formed part of the much larger Sherwood Forest and are shown on the Sanderson Plan of 1835. Around the edge of the present day woodland area are areas of permanent pasture and arable fields. The pasture areas are used for sheep grazing and horse grazing with associated stabling. To the south of the area are a number of buildings within the park. These include the Bestwood Lodge Hotel, which is a Victorian red brick building. There are various smaller lodges within the park. Many of these buildings are listed. The Fire Brigade HQ which is a modern building, is also located within the park and has an associated sports ground. The playing fields of Big Wood School are also within the area. The wood is County Council owned and open to the public and there are a number of parking areas within the woodland.

The woodland consists of mature Birch, Beech, Scot's Pine, Sycamore, Lime, Oak, Yew, with an under storey of Elder, Hawthorn, Holly, and Rhododendron, there are ornamental species around the hotel area. There are more open areas within the woodland with scrub and acidic grassland communities. There are strong hedgerows in the pasture areas to the south of the woodland and outgrown hedgerows to the pasture areas on the northern edge.

There is no settlement within the area but there is a large densely populated housing estate immediately to the southern edge which places high recreational pressure on this publicly owned area. Threats to the area include expansion of this housing, increased recreational pressure with provision of associated facilities and expansion of the built areas within the woodland. The spread of Rhododendron may also reduce the ecological diversity of the woodland.

# S PZ 42 Calverton Village Farmlands

## PHOTOGRAPH



## CHARACTERISTIC VISUAL FEATURES

- Gently undulating topography
- Improved and unimproved permanent pasture with intact historic field pattern
- Moderate intensity arable farming in small to medium sized fields
- Tall, bushy hawthorn hedgerows with mature Oak, Ash
- Ancient track way to centre of area with mixed species deciduous hedgerow with mature trees which is in declining condition
- Heath land character, apparent to road verges
- Isolated farms

## LANDSCAPE ANALYSIS

### Landscape Condition

The Landscape Condition is defined as **Moderate**

The PZ has a **coherent** pattern of elements as the majority of the area is farmland. However there are **some** detracting features These include a large housing estate immediately to the west of the site and encroachment of a golf course to the south east of the area. There is also some breakdown of the field pattern due to subdivision of the areas for horse grazing. Despite this overall this is a **visually coherent** area. There are no SINC designations within the area but the permanent pasture, and interconnecting hedgerows provide a **moderate** habitat for wildlife. Cultural integrity is **variable** in that the historic field pattern is intact but it is degraded in some areas.

A **visually coherent** area with a **moderate** functional integrity gives a **moderate** landscape condition.

### Landscape Sensitivity

The Landscape Sensitivity is defined as **Moderate**

The components of the landscape are **characteristic** of the Sherwood LCA. The time depth is **historic** (post 1600) giving a **moderate** sense of place overall. However there are remnants of the medieval field pattern near to the historic core of the village of Calverton.

The undulating landform is **apparent** and with **intermittent** tree cover provided by the bushy hedgerows which gives a moderate visibility into and out of the area.

A **moderate** sense of place with a **moderate** visibility gives a **moderate** landscape sensitivity overall.

## ACTIONS – Conserve and Create

### Landscape Features

- **Conserve** the historic pattern of permanent unimproved and improved pasture.
- **Conserve** mature hedgerows to pasture areas and roadsides.
- Seek opportunities to restore arable land to permanent pasture.
- Reinforce the mixed species hedgerows to the ancient track way by restoring sections of poor hedgerow boundary and replacing grubbed out sections

### Built Features

- **Conserve** the sparsely settled character of this area by concentrating any new development outside of this area of historic field pattern and within the core of Calverton Village.
- **Conserve** the existing field pattern by locating any new small scale development within the existing field boundaries.

## CONTEXT

NCC Landscape Type: Sherwood  
Policy Zone: S PZ 42  
Landscape Character Parcel: S14,S5,MN 71,MN73

## Condition

Good	REINFORCE	CONSERVE & REINFORCE	CONSERVE
Moderate	CREATE & REINFORCE	CONSERVE & CREATE	CONSERVE & RESTORE
Poor	CREATE	RESORE & CREATE	RESTORE

Low                      Moderate                      High

## Sensitivity

## SUMMARY OF ANALYSIS

### Condition                      Moderate

Pattern of Elements:                      Coherent

Detracting Features:                      Some

Visual Unity:                      Coherent

Ecological Integrity:                      Moderate

Cultural Integrity:                      Variable

Functional Integrity:                      Moderate

### Sensitivity                      Moderate

Distinctiveness:                      Characteristic

Continuity:                      Historic

Sense of Place:                      Moderate

Landform:                      Apparent

Extent of Tree Cover                      Intermittent

Visibility:                      Moderate

## **S PZ 42 Calverton Village Farmlands**

### **Policy: Conserve and Create**

This Policy Zone consists of a gently undulating area which varies in height between 45 metres in the valley of the Dover Beck to 84 metres on the slopes of Bonner Hill, the area slopes generally down to the north east.

Land use in the area consists of moderately intensively farmed arable land and unimproved and improved permanent pasture. The historic field pattern of Sanderson's Plan of 1835 is intact, although the pasture areas, used for horse grazing, are being subdivided with tape fencing to form smaller paddocks particularly along the north of Bonner Lane.

The road edge hedgerows to Bonner Lane are strong and bushy, mostly Hawthorn, and contain mature trees, mostly Ash. Field boundary hedgerows and track hedgerows are generally mature and bushy, mainly Hawthorn and Field Maple. A track known as Crookdale Lane crosses the centre of the area, this is a former ancient track way and at the time of original MLA survey it was enclosed by a strong mixed species deciduous hedgerow with standard trees. Tree species still exist intermittently along its length, mostly Ash and Oak. The hedgerow is still strong in places but much of it has been grubbed out or is poor condition.

The only settlement in the area is an isolated farm building. A large residential housing estate lies immediately to the west of the area. Threats to the area include the expansion of this residential area from the west, expansion of the Golf Course to the south east, as well as flooding of the Dover Beck.

# S PZ 44 Newstead Abbey Wooded Estatelands

## PHOTOGRAPH



## CHARACTERISTIC VISUAL FEATURES

- Gently undulating topography
- Mature deciduous woodland with open areas of heath land and acidic grassland
- Shrubby under storey to woodland with Rhododendron in places
- Coniferous woodland dominated by Scot's Pine
- Parkland landscape with mature Oak trees
- Ruins of Newstead Priory
- Newstead Abbey with associated ornamental gardens and lakes

## LANDSCAPE ANALYSIS

### Landscape Condition

The Landscape Condition is defined as **Very Good**

The PZ has a **coherent** pattern of elements as much of the area is woodland. There are **few** detracting features, these include a large visitor car parking to the centre of the site and vehicles moving through the area. Overall this is a **visually unified** area. The woodland is designated as a SINC 1/34 Newstead Park (including the River Leen system) 'an impressive variety of habitats of floral and faunal importance'. The mature woodland, mature parkland trees, heath land, acid grassland and interconnecting hedgerows linking the area to other adjacent heath land habitats provide a **strong** habitat for wildlife. Cultural integrity is **good** in that the historic features within the site and woodland existing at the time of the Sanderson's Plan of 1835 remain and have been extended.

A **visually unified** area with a **very strong** functional integrity gives a **very good** landscape condition

### Landscape Sensitivity

The Landscape Sensitivity is defined as **High**

The assemblage of landscape features is unique and rare in the Sherwood LCA as a whole. The time depth of many of the features is **ancient** giving a **very strong** sense of place overall.

The undulating landform is **apparent** and **enclosed** by the large area of woodland giving a **low** visibility into and out of the area. There are views out from the northern perimeter to the wooded ridgelines of the Sherwood area.

A **very strong** sense of place with a **low** visibility gives a **high** landscape sensitivity overall.

## ACTIONS – Conserve

### Landscape Features

- **Conserve** the ecological diversity of the woodland and individual mature trees.
- **Conserve** areas of heath land and acidic grassland within the woodland areas.
- **Conserve** wetland habitats
- Reinforce native species under storey by removing rhododendron to the interior of the woodland.

### Built Features

- **Conserve** the character and architectural style of the historic abbey and priory buildings and its parkland and gardens and ensure this is respected in any new development.
- Locate any new small scale development to the east of the site in the more wooded area where it is well screened.

## CONTEXT

NCC Landscape Type: Sherwood  
Policy Zone: S PZ 44  
Landscape Character Parcel: S 13

## Condition

Good	REINFORCE	CONSERVE & REINFORCE	CONSERVE
Moderate	CREATE & REINFORCE	CONSERVE & CREATE	CONSERVE & RESTORE
Poor	CREATE	RESORE & CREATE	RESTORE

Low                      Moderate                      High

## Sensitivity

## SUMMARY OF ANALYSIS

### Condition

**Very Good**

Pattern of Elements:	Coherent
Detracting Features:	Few
Visual Unity:	Unified
Ecological Integrity:	Strong
Cultural Integrity:	Good
Functional Integrity:	Very Strong

### Sensitivity

**High**

Distinctiveness:	Unique/Rare
Continuity:	Ancient
Sense of Place:	Very strong
Landform:	Apparent
Extent of Tree Cover	Enclosed
Visibility:	Low

## **S PZ 44 Newstead Abbey Wooded Estatelands**

### **Policy: Conserve**

This Policy Zone consists of a gently undulating site ranging in height from 100 metres in the south to 161 metres in the north.

The eastern half of the area is covered by mature deciduous woodland and a section of coniferous woodland known as Lady Wildman's Wood. Within this woodland there are open areas of heath land and acidic grassland with Birch and Oak trees. The western half of the area consists of the ruins of the medieval Newstead Priory and Newstead Abbey the ancestral home of Lord Byron with surrounding open lawns with parkland trees and ornamental gardens. There is also a series of lakes. There are coniferous Scot's pine and deciduous woodlands to the perimeter of the western area. To the east is an arable farmed area.

There are isolated farm buildings located within the western half of the site as well as lodges and recreational facilities associated with the park. The park is owned by Nottingham City Council and is open to the public with vehicular access into the centre of the park where there is a large central parking area. A number of prestigious detached residential buildings are located in the eastern woodland area. Hagnook Wood to the north is a residential area completely enclosed by woodland. The Robin Hood Way and numerous PROWs cross the region.

The woodland to the east contains mature Ash, Beech, Birch Oak, Sycamore, and Scot's Pine with a Rhododendron under storey in places. There are ornamental and exotic tree species around the abbey and priory area. The Parkland trees species are mainly Oak.

Threats to the character of the area include further incursion of prestigious housing into the woodland areas, development of housing in the more open areas of the estate, and increased visitor pressure leading to increased vehicular traffic and provision of further recreational facilities.

# S PZ 46 Blidworth Wooded Estatelands

## PHOTOGRAPH



## CHARACTERISTIC VISUAL FEATURES

- Gently undulating to steeply undulating topography
- Permanent unimproved and improved pasture grazed by horses
- Arable production of cereals and oil seed rape.
- Strong bushy hedgerows to road edges and field boundaries including Holly, with mature trees mainly Oak and Ash
- New Lane has particularly species rich hedgerows with many tree species, including Oak and Holly
- Heath land character particularly to track verges, especially to New Lane
- Small areas of deciduous woodland connecting to the valley of Rainworth Water
- Isolated farms and residential properties

## LANDSCAPE ANALYSIS

### Landscape Condition

The Landscape Condition is defined as **very good**

The Policy Zone has a **unified** pattern of elements as the majority of the area is permanent improved and unimproved pasture. However there are **some** detracting features in that there is some breakdown of the field pattern due to subdivision of the field areas into smaller paddocks for horse grazing. There are also many temporary wooden stables within the paddocks. Busy roads also pass through the area. Despite this, overall this is a **visually unified** area. There are 3 SINC designations within the area, and these are all woodlands with acid grassland to the north of the area connecting to the valley of Rainworth Water. The permanent pasture, and interconnecting mature hedgerows and small woodlands provide a **moderate** habitat for wildlife. Cultural integrity is **good** in that the historic field pattern is intact.

A **visually unified** area with a **strong** functional integrity gives a **very good** landscape condition.

### Landscape Sensitivity

The Landscape Sensitivity is defined as **moderate**

The components of the landscape are **characteristic** of the Sherwood LCA. The time depth is **historic** (post 1600) giving a **moderate** sense of place overall. However the medieval field pattern around the historic core of the village of Blidworth is intact throughout the area and many of the farms use vernacular materials of stone or red brick with pantile roofs. Some elements of the landscape such as the mature hedgerows are possibly ancient, the evidence being the number of species present within the hedgerows.

The undulating landform is **apparent** and with **intermittent** tree cover provided by the bushy hedgerows which gives a **moderate** visibility into and out of the area. There are panoramic views to the north and south from the high point of New Lane to the north of the area.

A **moderate** sense of place with a **moderate** visibility gives a **moderate** landscape sensitivity overall.

## CONTEXT

NCC Landscape Type: Sherwood  
Policy Zone: S PZ 46  
Landscape Character Parcel: S 10

## Condition

Good	REINFORCE	CONSERVE & REINFORCE	CONSERVE
	CREATE & REINFORCE	CONSERVE & CREATE	CONSERVE & RESTORE
Moderate	CREATE	RESORE & CREATE	RESTORE
Poor			
	Low	Moderate	High
	<b>Sensitivity</b>		

## SUMMARY OF ANALYSIS

### Condition

**Very Good**

Pattern of Elements:	Unified
Detracting Features:	Some
Visual Unity:	Unified
Ecological Integrity:	Moderate
Cultural Integrity:	Good
Functional Integrity:	Strong

### Sensitivity

**Moderate**

Distinctiveness:	Characteristic
Continuity:	Historic
Sense of Place:	Moderate
Landform:	Apparent
Extent of Tree Cover:	Intermittent
Visibility:	Moderate

## ACTIONS – Conserve

### Landscape Features

- **Conserve** the historic pattern of permanent unimproved and improved pasture.
- **Conserve** mature hedgerows with mature trees to pasture areas and roadsides.
- **Conserve** the possibly ancient mature hedgerows and mature trees to New Lane
- **Conserve** small woodlands with acid grassland to the north of area.
- **Create** opportunities for restoring areas of heath land where appropriate

### Built Features

- **Conserve** the sparsely settled character of this area by concentrating any new development outside of this area of historic field pattern and within the core of Blidworth Village.
- **Conserve** the existing field pattern by locating any new small scale development within the existing field boundaries.
- Promote sensitive design and siting of new agricultural buildings and temporary stables for horses
- Promote measures for reinforcing the traditional character of farm buildings using vernacular building styles.



# TW PZ 5 Stoke Bardolph Village Farmlands

## PHOTOGRAPH



## CONTEXT

Eastern fringes of Nottingham  
 NCC Landscape Sub Type: Village Farmlands  
 Policy Zone: TW PZ 5  
 Land Cover Parcel TW8

### Condition

Good	REINFORCE	CONSERVE & REINFORCE	CONSERVE
Moderate	CREATE & REINFORCE	CONSERVE & CREATE	CONSERVE & RESTORE
Poor	CREATE	RESTORE & CREATE	RESTORE

Low                      Moderate                      High

### Sensitivity

## CHARACTERISTIC VISUAL FEATURES

- Flat, large scale arable landscape with strong suburban influences
- Medium to large-sized fields with hedgerows intact but fragmented in places
- Landscape fragmented by roads and railway
- Linear planting along transport routes
- Nuclear village of Stoke Bardolph with red brick and pantile roofed buildings to the historic core

## LANDSCAPE ANALYSIS

### Landscape Condition

Landscape condition is defined as **very poor**. It has been fragmented as a result of transport routes and suburban development. There are steep embankments to the Colwick Loop Road and the new G.T.I bypass road. Dead-ends have been created as a result of the new road developments. There are **many detracting features** including pylons which dominate the skyline to the east, the large sewage works to the centre of the area, the retail park to the south and busy transport routes. Overall the visual unity of the area is **significantly interrupted**.

There are no SINC's or other ecological designations. Woodland cover is largely along transport routes, or screening belts associated with the sewage works. There is mature woodland around Gedling House to the north west. Non-native trees have been planted to the verge of the A612. Native mixed species bushy hedgerows are common along roadsides and are generally well maintained. Internal field boundaries have been allowed to deteriorate and are gappy in places. Overall this is a **moderate** habitat for wildlife.

The historic field pattern has largely broken down - field sizes are generally medium to large scale. The historic core of Stoke Bardolph is characterised by red brick and pantile roofed buildings, with more recent non-vernacular development to the fringes; cultural integrity is therefore **variable**. A **moderate** habitat for wildlife and a **variable** cultural integrity leads to a **coherent** functional integrity / habitat for wildlife.

An area which is **significantly interrupted** visually with a **coherent** functional integrity / habitat for wildlife gives a **very poor** landscape condition

### Landscape Sensitivity

Landscape sensitivity is defined as **very low**. Few characteristic features of this landscape are still in evidence. Historic woodland still exists around Gedling House and there are some good mixed species hedgerows along roads. However, the historic time depth is **recent**, as it has been degraded by urban development, transport routes and intensive arable farming.

Recent development such as the retail park and the sewage works are large scale and dominate views. New roads have fragmented the landscape and steep embankments are unnatural features; the sense of place is **very weak**.

Visibility is **moderate** due to containment by urban fringes, steep embankments and **intermittent** tree cover. There are some long distance views across the flat landscape and open views beyond the boundary of the area.

A **very weak** sense of place with a **moderate** degree of visibility leads to a **very low** landscape sensitivity.

## SUMMARY OF ANALYSIS

### Condition

**Very Poor**

Pattern of Elements:	Incoherent
Detracting Features:	Many
Visual Unity:	Significantly interrupted
Ecological Integrity:	Moderate
Cultural Integrity:	Variable
Functional Integrity:	Coherent

### Sensitivity

**Very Low**

Distinctiveness:	Indistinct
Continuity:	Recent
Sense of Place:	Very Weak
Landform:	Apparent
Extent of Tree Cover	Intermittent
Visibility:	Moderate

## LANDSCAPE ACTIONS - Create

- **Create** new hedgerows and restore existing hedgerows – seek opportunities to restore historic field pattern.
- Seek opportunities to restore arable land to permanent pasture/wet grassland.
- Enhance visual unity through appropriate small scale tree and woodland planting.
- **Create** woodland to contain and soften urban development, preferably in advance of development
- **Conserve** the rural character of the landscape by concentrating new development around existing settlements
- **Conserve** historic field pattern by containing new development within historic enclosed boundaries, restoring hedgerow boundaries where necessary
- Strengthen the continuity and ecological diversity of stream corridors
- **Conserve** the character and setting of village settlements

# **TW PZ 5 Stoke Bardolph Village Farmlands**

## **Policy: Create**

### **Character Summary**

The area lies on the urban fringes of Carlton to the east of Nottingham. The urban edge forms the western boundary and the A612/Burton Joyce village forms the northern boundary, with the steeply rolling landscape of the Dumble Farmlands visible to the north. The River Trent forms the eastern boundary. Victoria Retail Park lies to the south and former gravel pits lie to the south outside the boundary.

The area is flat and is dominated by large scale intensive arable farming. Suburban land uses are also prominent within the area - the large sewage works to the centre, together with the retail park to the south and the busy roads to the west and north west. A railway line also runs north east to south west across the area. Other suburban land uses include recreation/sports grounds and allotments. Pylons dominate the skyline to the east.

The historic field pattern has been lost and the landscape has been fragmented over the years by the railway line, A612 Colwick Loop Road to the west, and more recently the new GTI bypass road to the west. Steep road embankments form alien features in the landscape.

Woodland is not a dominant feature but is apparent, particularly linear planting along transport routes. A belt of mature tree planting along Stoke Lane screens the sewage works from xxx to the south, with Poplar, Ash and Willow as the dominant species. A row of Lombardy Poplars has been planted along Stoke Lane along the boundary with the Trent to the east.

Roadside hedgerows are generally in good condition, some are mixed species hedgerows which have been allowed to grow taller. Internal field boundaries are generally trimmed Hawthorn hedgerows which have become fragmented in places. Regular and semi-regular geometric fields are generally medium to large in size.

The historic core of Stoke Bardolph with red brick and pantile roofed buildings contrasts with the more modern large scale suburban developments which have encroached from the west.



#### LANDSCAPE ACTIONS – Conserve and Create

- **Conserve** the historic character and setting of village settlements – new development should respect the scale, design and materials used traditionally
- **Conserve** historic field pattern by containing new development within historic boundaries
- **Conserve** existing meadowland hedgerows and seek opportunities to restore the historic field pattern with new hedgerow planting.
- **Create** small scale woodlands and carry out appropriate tree planting to reduce the visual impact of large scale agricultural sheds and commercial development along the A612
- Seek opportunities to restore arable land to permanent pasture.
- Strengthen the continuity and ecological diversity of stream corridors

## **TW PZ 6 Bulcote Village Farmlands**

### **Policy: Conserve and Create**

#### **Character Summary**

This small, flat, linear area lies to the east of the village of Burton Joyce, lying to the northern fringes of the floodplain. The busy A612 forms the north western boundary with the steeply rolling landscape of the Dumble Farmlands dominating views to the north. The A6097 forms the north eastern boundary. A railway line runs north east to south west, bisecting the area.

Bulcote Village lies to the south of the area with isolated farms off the A612. The village is a historic settlement dominated by red brick and pantile roofed buildings. Bulcote is a designated Conservation Area and there are several listed buildings within the village, mature trees are also present within the gardens of the larger properties. The area also lies within the Nottingham Green Belt.

Bulcote Farm is a large scale development run by Severn Trent Water / Stoke Bardolph Estate.

The area is dominated by intensive arable farming with a regular geometric field pattern. A strong hedgerow runs along the A612. Internal hedgerows are more gappy and fragmented in places. Hedgerows are largely Hawthorn with older, mixed species hedgerows including Holly within Bulcote.

Fields are generally medium-sized. The historic field pattern has largely disappeared.

There is little woodland cover with trees largely along transport routes. A woodland block has recently been planted to the south of the railway line at Burton Joyce – approximately 20 years old. Species include Ash, Oak, Beech and Lime. There is a Lime avenue along the track to the south of Bulcote Farm.

Views from the A612 are generally open east towards the Trent Valley. Views to the west are enclosed by steep hills.

# TW PZ 51 Stoke Lock Meadowlands

## PHOTOGRAPH



## CHARACTERISTIC VISUAL FEATURES

- Flat, low lying landscape with flood alleviation embankments against the River Trent.
- Open views from the Trent to wooded hills in the north and south.
- Intensive arable fields with pasture between the flood bunds and river.
- Abandoned gravel workings with establishing scrub vegetation.
- Some strong hedgerows particularly along farm tracks.

## LANDSCAPE ANALYSIS

### Landscape Condition

The overall condition of this landscape is defined as **moderate**. This area lies to the east of Burton Joyce and west of Shelford. It extends south to Netherfield pits and north up to the edge of Gunthorpe. Lying directly either side of the Trent, this area is relatively undeveloped and the pattern of landscape elements is **coherent**. Although it has **some** detracting features these tend to be scattered, such as the pylons across the river bluff to the north west of Shelford, the former railway sidings and industrial unit to the south west and the caravan retail site to the west of the A6097. Overall this is a **visually coherent** area

There are several SINC sites within this area including Netherfield Pits (also a local nature reserve) and Gunthorpe Lakes - both areas of old gravel workings, Burton Meadows Loop and Shelford Carr. However, the intervening landscape is fairly medium to large intensive arable fields with only narrow margin of less intensive grazing pasture against the River Trent giving an overall ecological integrity of **moderate**. Tree cover is generally riparian vegetation such as Willow and Ash against the river and water courses. Some woodland is also found around Stoke Lock consisting of Sycamore, Cherry, Hazel and Lime. Field boundaries tend to be variable with some intact and well maintained and others fragmented with post and rail fencing

Gravel extraction sites have left a highly modified landscape in some areas but there are other areas that are more intact closer to settlement edges. The cultural integrity is therefore **variable**.

A **moderate** network for wildlife and a **variable** cultural integrity leads to a **coherent** functional integrity/habitat for wildlife. An area that is **visually coherent** with a **coherent** functional integrity/ habitat for wildlife has a **moderate** landscape condition.

### Landscape Sensitivity

Landscape sensitivity is defined as **moderate**. Settlements tend to be located on the edge of this area on slightly higher land outside the flood plain. Isolated and generally red brick houses and cottages are found to the west of the A road in Gunthorpe and to the eastern side of Stoke Bardolph, including the lock cottage at Stoke. The Holmes farm house lies within the centre of this area on a river bluff.

The absence of development immediately along side the River Trent respects the low lying flood plain of this river. Hedgerows are strong in places particularly along tracks where mixed hedges are more common. The features which give the area its local distinctiveness are **characteristic** of the Trent Washlands RCA and the continuity/time depth is **historic** (post 1600). The area has a **moderate** sense of place.

This is a flat landscape with some open areas of grazing next to the River Trent. This flat landscape allows longer distance views up and down the Trent Valley. To the east and west the views are contained by the low often wooded hills. **The apparent / flat?** landform and **intermittent tree cover** which leads to **moderate** visibility of the area from outside the PZ.

A **moderate** sense of place with a **moderate** degree of visibility leads to a **moderate** landscape sensitivity.

## CONTEXT

NCC Landscape Sub Type: River Meadowlands  
Policy Zone: TW PZ 51  
Land Cover Parcel TW9

## Condition

Good	REINFORCE	CONSERVE & REINFORCE	CONSERVE
Moderate	CREATE & REINFORCE	CONSERVE & CREATE	CONSERVE & RESTORE
Poor	CREATE	RESTORE & CREATE	RESTORE

Low                      Moderate                      High

## Sensitivity

## SUMMARY OF ANALYSIS

**Condition** **Moderate**

Pattern of Elements:	Coherent
Detracting Features:	Some
Visual Unity:	Coherent
Ecological Integrity:	Moderate
Cultural Integrity:	Variable
Functional Integrity:	Coherent

**Sensitivity** **Moderate**

Distinctiveness:	Characteristic
Continuity:	Historic
Sense of Place:	Moderate
Landform:	Apparent
Extent of Tree Cover	Intermittent
Visibility:	Moderate

#### LANDSCAPE ACTIONS - Conserve and Reinforce

- **Conserve** the traditional pastoral character and undeveloped flood plain adjacent to the River Trent.
- Enhance the ecological diversity of the river meadowlands and seek opportunities to recreate wet grassland.
- **Reinforce** and strengthen the continuity and ecological diversity of stream and water courses.
- **Conserve** and enhance the pattern and special features of meadowland hedges.
- Seek opportunities to convert arable land to permanent pasture
- Enhance visual unity through appropriate small-scale tree and woodland planting



# **TW PZ 51 Stoke Lock Meadowlands**

## **Policy: Conserve and Create**

### **Character Summary**

This is a flat valley landscape that is dominated by arable land use. Arable farming has generally led to the loss of internal field boundaries although there are still some smaller fields used for arable crops with strong hedgerows. There are also small areas of pasture particularly immediately alongside the River Trent which are crossed by the long distance footpath "The Trent Valley Way"

The area has the impression of being well wooded due to tall hedgerows particularly along farm tracks. However woodland tends to be actually limited to localised areas such as around Stoke Lock, west of Shelford Manor and some of the former gravel extraction sites.

Field sizes vary from small paddocks adjacent to the village of Gunthorpe and the Cocker Beck water course to larger fields in the arable areas.

The historic field pattern has largely been modified by the intensification of arable farming. The hedgerows are generally trimmed hawthorn hedges, with ash hedgerow trees.

There is some commercial development along A6097 with caravan sales and van hire to the north eastern edge of this area. However settlements tend to be located to the edge of this area outside the immediate flood plain on slightly higher ground.

## GLOSSARY

**Analysis** - the separation of a landscape into its constituent parts for individual study. The study of these parts and their interrelationships in making up a landscape.

**Attributes** – the individual elements or parts which define landscape character such as landform, geology, soils, type of vegetation, settlements.

**Ancient woodland** - woodland which has been in continuous existence since at least 1600 and is identified on the Ancient Woodland Inventory for England. Most tend to be a rare and valuable ecological resource, with an diverse range of plants and animals.

**Brownfield site** – an area of land which has previously been developed. It may or may not still contain buildings or areas of hard standing.

**Characterisation** – the systematic process of creating an understanding of landscape character and identifying areas of unique character.

**Character Area** - a individual discrete area of landscape with a unique identity which lies within a specific landscape character type.

**Character Type** - a generic term for landscape with a consistent, uniform character. Landscape character types may occur in different parts of the country, but share common combinations of geology, landform, vegetation or human influences.

**Characteristic** - an element or attribute that contributes to a sense of place or local distinction (e.g. prominent hill, mature woodland, river, parkland or hall).

**Copse** – a thicket of small trees or shrubs.

**Core Strategy** – a plan which sets out the long-term vision for a local planning authority's area. Includes broad objectives and policies to achieve this vision.

**Covert** – a small planted woodland established as cover for game.

**Description** – written text explaining what a landscape looks like.

**Element** – an aspect of the landscape such as a hedge, wall or pond.

**Evidence base** – a series of documents which provide up-to-date information covering the social, economic and environmental aspects of an area. This enables the production of sound and informed Local Development Framework.

**Feature** - a notable aspect often prominent (e.g. hill, church spire, power station).

**Field pattern** – a configuration of fields, hedgerows, roads and trackways which have been formed as a result of specific historic actions.

**Ground type** - soil forming environment which determines the surface pattern of vegetation and land use.

**Horsiculture** - term used to describe areas which are dominated by horse paddocks, stable buildings and associated equipment, often on the urban fringe.

**Irregular geometric field patterns** – geometric layouts which are less regular (less linear or rectangular) than regular geometric layouts (see below). Mostly associated with Parliamentary enclosures during the 18<sup>th</sup> and 19<sup>th</sup> centuries.

**Joint Landscape Character Area** – refers to the broad landscape character areas that describe the character of England on Natural England's Character Map of England.

**Landscape** – an area as perceived by people whose character is the result of action and interaction of natural and/or human factors.

**Landscape Condition** – is a consideration of the state or intactness of landscape features and characteristics and how these combine to form a positive visual impression. This includes elements such as hedgerows, woodlands, field pattern, urban influences and restored landscapes.

**Land cover** - combinations of land use and vegetation that cover the land surface.

**Local Development Document** – are a set of documents specified in planning law that a Local Planning Authority prepares to describe their strategy for development and use of land in their area of authority.

**Local Development Framework** - a suite of local development documents that outlines how land use planning will be managed in an area.

**Local Plan** – a document that sets out planning policies and land allocations for a local authority area. These are now being replaced by Local Development Frameworks.

**Modern modified field patterns** – fields of modern origin. Patterns present on 19<sup>th</sup> century maps are no longer evident. Frequently but not entirely associated with responses to post World War II agricultural policies and technology.

**Patterns reflecting open fields** – field patterns with strong linear dominants, often sinuous, which originate in enclosure of strips in open fields. Usually early enclosure prior to parliamentary enclosure acts.

**Physiography** – expression of the shape and structure of the landscape as influenced by both nature of the underlying geology and geological processes

**Planning Policy Guidance (PPG)** - government guidance to explain statutory provisions and provide guidance to local authorities and others on planning policy and the operation of the planning system.

**Planning Policy Statements (PPS)** – a replacement for PPGs which explain statutory provisions and provide guidance on planning policy and operation of the planning system.

**Outcrop** - a portion of rock protruding through the soil level.

**Regional Spatial Strategy** - provide a regional level planning framework for the regions of England. It is used as an overarching framework and basis for local planning authorities in the preparation of Local Development Frameworks.

**Regularly laid out large geometric field patterns (Regular Geometric)** – large geometric enclosures commonly associated with Parliamentary Enclosures during the 18<sup>th</sup> and 19<sup>th</sup> centuries.

**Riparian habitat** - riverbank habitat.

**Rough grazing** – land often associated with poor soils with low intensity grazing of grasslands by animals.

**Semi-regular field patterns** – patterns which are loosely geometric in layout, involving linear, rectangular or square arrangements but that are less sharply defined than geometric layouts. There is no definite date when these fields were enclosed and date from the Middle Ages to the 19<sup>th</sup> Century.

**Senescence** – the process of aging, defined as the start of old age.

**Settlement pattern** - is the structural component of the cultural landscape reflected in the distribution of settlements; historic enclosure; and size of tenure of agricultural holdings.

**Topography** - combinations of slope and elevation that produce the shape and form of the land surface e.g a floodplain or a hill.

**Vernacular** - buildings constructed in a local style, from local materials and using specific building techniques. This term relates to all buildings in similar groups usually within villages or older town and city centres.

# **Landscape Character Assessment – Policy Zones**

